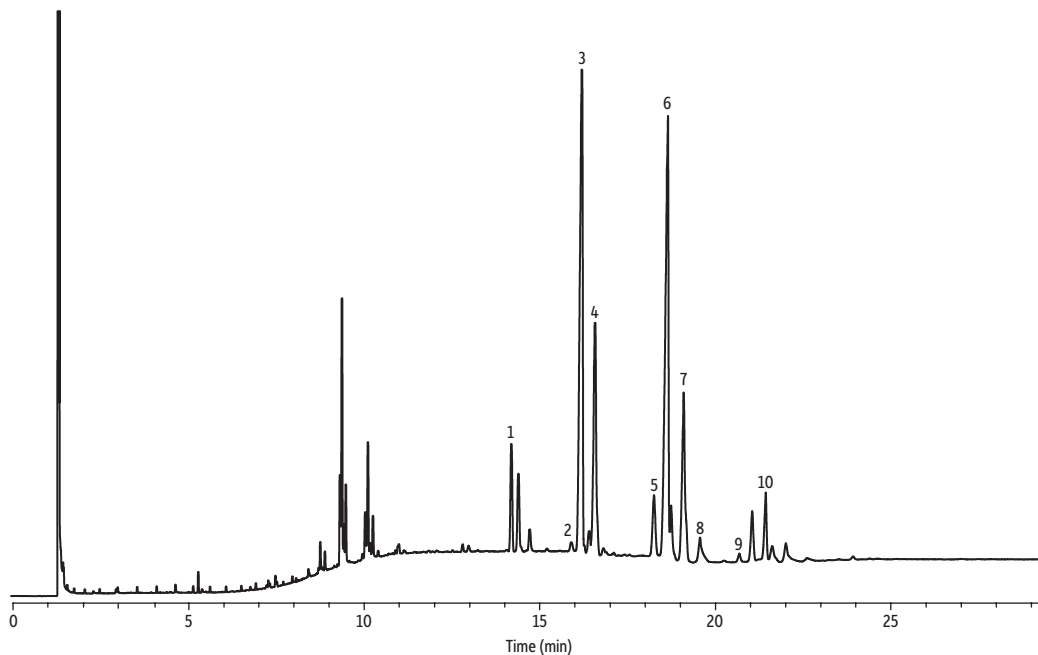


Palm Oil on Rxi-65TG



GC_FF1292

Peaks	tr (min)
1. Tripalmitin (PPP)	14.252
2. 1,2-Palmitin-3-stearin (PPS)	15.958
3. 1,3-Palmitin-2-olein (POP)	16.261
4. 1,2-Palmitin-3-linolein (PPL)	16.637
5. 1-Palmitin-2-olein-3-stearin (POS)	18.319
6. 1,2-Olein-3-palmitin (POO)	18.717
7. 1-Palmitin-2-linolein-3-olein (PLO)	19.159
8. 1,2-Linolein-3-palmitin (PLL)	19.617
9. 1,2-Stearin-3-olein (SOS)	20.752
10. Triolein (OOO)	21.496

Column Rxi-65TG, 30 m, 0.25 mm ID, 0.1 µm (cat.# 17108)
Sample Palm oil
Conc.: ~50 mg of palm oil was diluted to 10 mL with isoctane
Injection
 Inj. Vol.: 1 µL split (split ratio 35:1)
 Liner: Topaz 4.0 mm ID Precision inlet liner w/wool (cat.# 23305)
 Inj. Temp.: 360 °C
 Split Vent
 Flow Rate: 35 mL/min
Oven
 Oven Temp.: 200 °C (hold 1 min) to 350 °C at 20 °C/min to 365 °C at 1 °C/min (hold 6 min)
 Carrier Gas H₂, constant flow
 Flow Rate: 1 mL/min
Detector
 Make-up Gas FID @ 365 °C
 Flow Rate: 30 mL/min
 Make-up Gas
 Type: N₂
 Hydrogen flow: 40 mL/min
 Air flow: 370 mL/min
 Data Rate: 50 Hz
Instrument Agilent 7890B GC