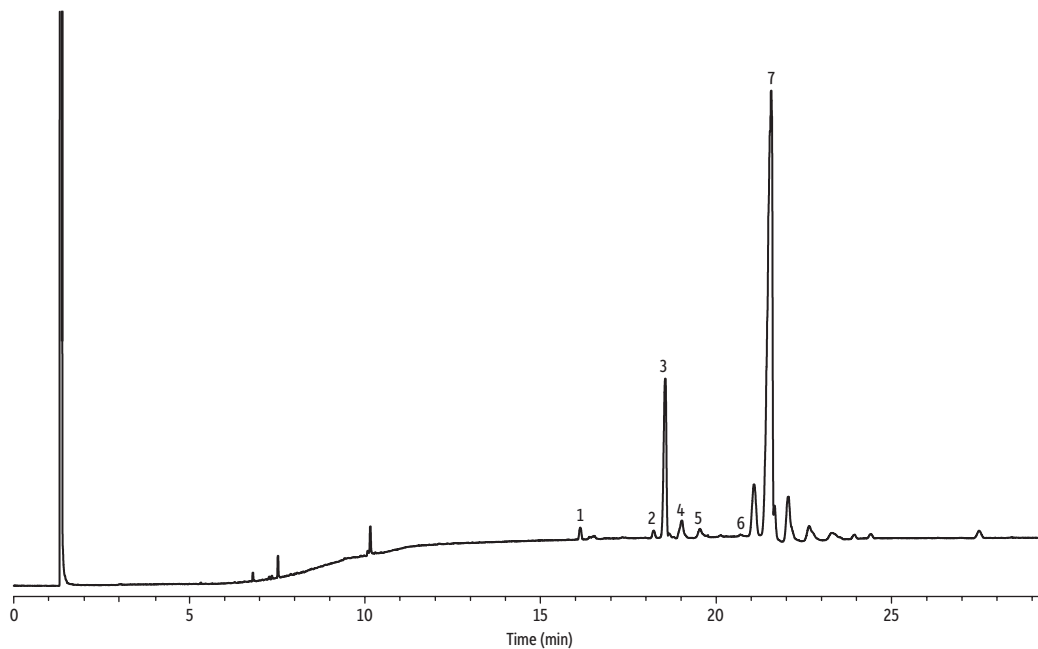


# Sunflower Oil on Rxi-65TG



GC\_FF1294

Peaks	tr (min)	Column	Rxi-65TG, 30 m, 0.25 mm ID, 0.1 µm (cat.# 17108)
1. 1,3-Palmitin-2-olein (POP)	16.147	Sample	Sunflower oil
2. 1-Palmitin-2-olein-3-stearin (POS)	18.244	Conc.:	~50 mg of sunflower oil diluted to 10 mL with isoctane.
3. 1,2-Olein-3-palmitin (POO)	18.573	Injection	
4. 1-Palmitin-2-linolein-3-olein (PLO)	19.047	Inj. Vol.:	1 µL split (split ratio 35:1)
5. 1,2-Linolein-3-palmitin (PLL)	19.561	Liner:	Topaz 4.0 mm ID Precision inlet liner w/wool (cat.# 23305)
6. 1,2-Stearin-3-olein (SOS)	20.709	Inj. Temp.:	360 °C
7. Triolein (OOO)	21.591	Split Vent	
		Flow Rate:	35 mL/min
		Oven	
		Oven Temp.:	200 °C (hold 1 min) to 350 °C at 20 °C/min to 365 °C at 1 °C/min (hold 6 min)
		Detector	FID @ 365 °C
		Make-up Gas	
		Flow Rate:	30 mL/min
		Make-up Gas	
		Type:	N <sub>2</sub>
		Hydrogen flow:	40 mL/min
		Air flow:	370 mL/min
		Data Rate:	50 Hz
		Instrument	Agilent 7890B GC