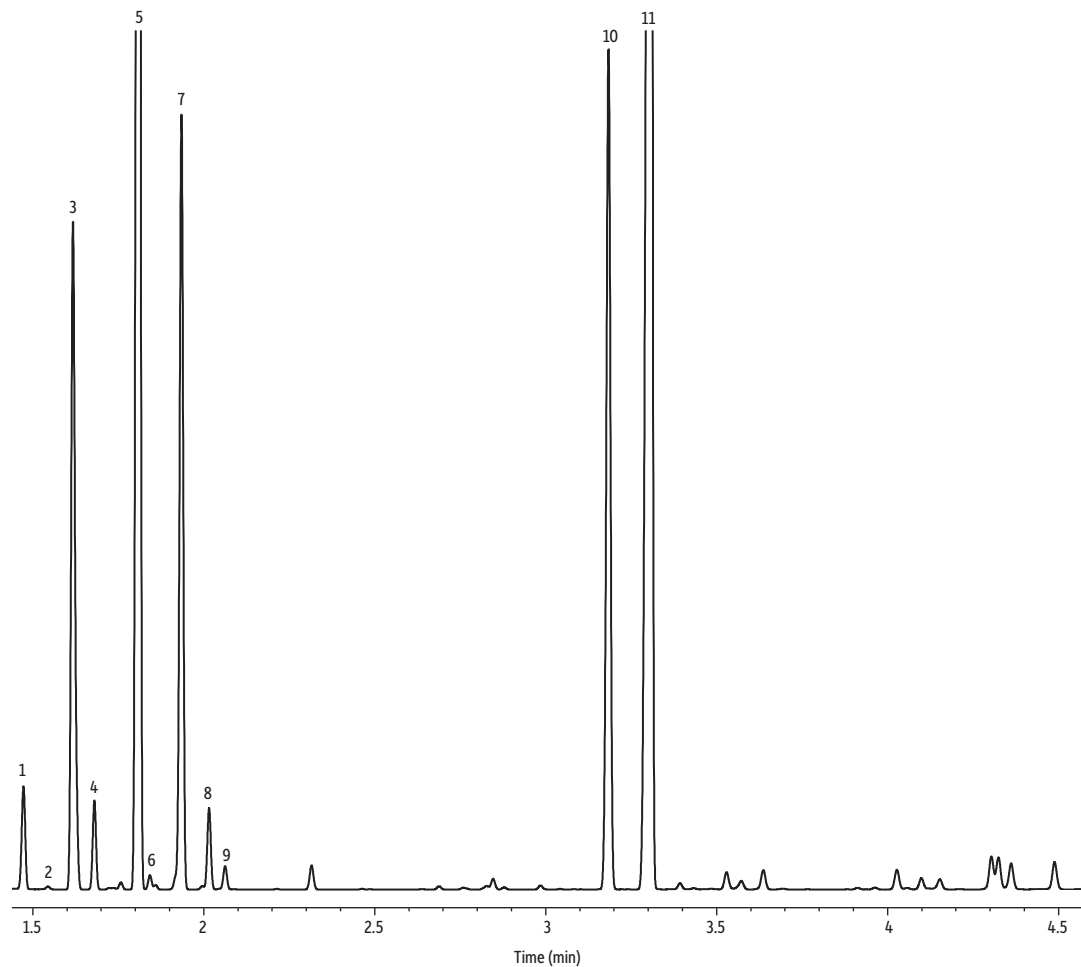


Bergamot Oil on Rtx-Wax



GC_FF1297

Peaks	Retention Time (min)
1. α -Pinene	1.470
2. Camphene	1.542
3. β -Pinene	1.620
4. β -Myrcene	1.680
5. D-Limonene	1.836
6. β -Phellandrene	1.853
7. γ -Terpinene	1.951
8. <i>p</i> -Cymene	2.019
9. Terpinolene	2.064
10. Linalool	3.213
11. Bergamol	3.387

Column Rtx-Wax, 30 m, 0.32 mm ID, 0.25 μ m (cat.# 12424)
Sample Bergamot oil
Diluent: Acetone
Conc.: 5%
Injection
Inj. Vol.: 1 μ L split (split ratio 100:1)
Liner: Topaz 4.0 mm ID Precision inlet liner w/wool (cat.# 23305)
Inj. Temp.: 230 $^{\circ}$ C
Oven
Oven Temp.: 100 $^{\circ}$ C (hold 0.5 min) to 250 $^{\circ}$ C at 16 $^{\circ}$ C/min (hold 10 min)
Carrier Gas H₂, constant flow
Flow Rate: 2 mL/min
Detector FID @ 250 $^{\circ}$ C
Constant Column +
Constant Make-up: 52 mL/min
Make-up Gas Type: N₂
Hydrogen flow: 40 mL/min
Air flow: 400 mL/min
Data Rate: 50 Hz
Instrument Agilent 7890A GC
Notes All peaks were identified using the NIST MS EI spectra library (2005).