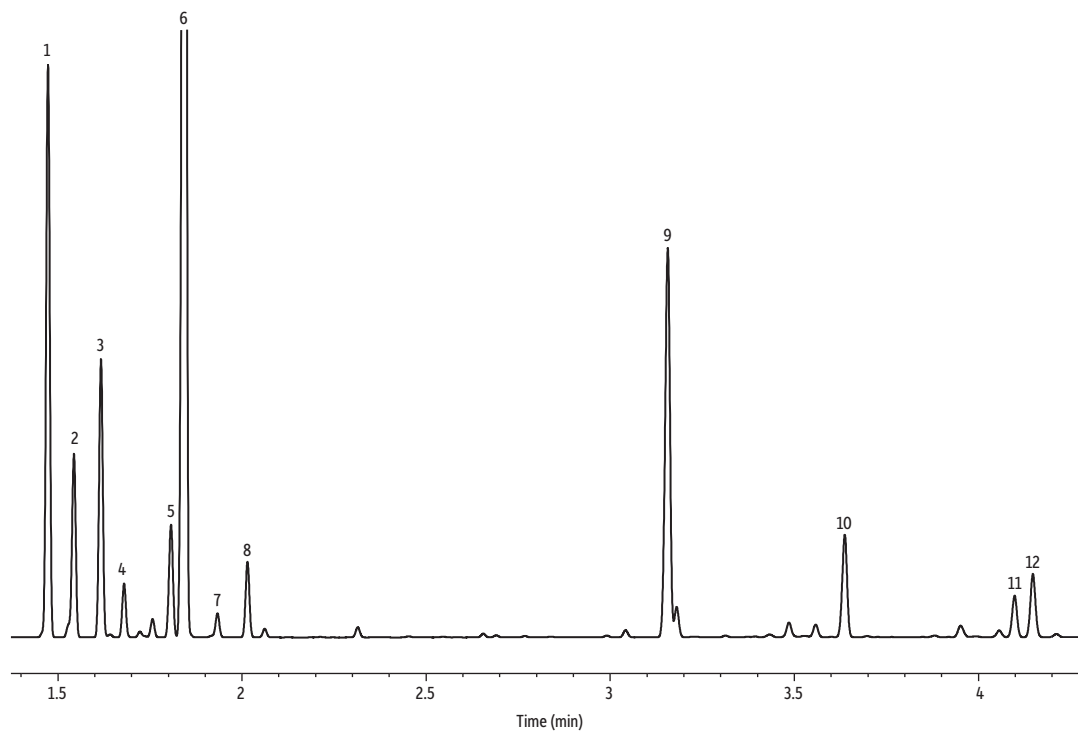


Rosemary Oil on Rtx-Wax



GC_FF1299

Peaks	tr (min)
1. α -Pinene	1.473
2. Camphene	1.544
3. β -Pinene	1.617
4. β -Myrcene	1.68
5. Limonene	1.807
6. Eucalyptol	1.844
7. γ -Terpinene	1.933
8. <i>p</i> -Cymene	2.015
9. Camphor	3.158
10. Caryophyllene	3.637
11. α -Terpineol	4.098
12. Borneol	4.148

Column Rtx-Wax, 30 m, 0.32 mm ID, 0.25 μ m (cat.# 124-24)
Sample Rosemary oil
Diluent: Acetone
Conc.: 5%
Injection
Inj. Vol.: 1 μ L split (split ratio 100:1)
Liner: Topaz 4.0 mm ID Precision inlet liner w/wool (cat.# 23305)
Inj. Temp.: 230 °C
Oven
Oven Temp.: 100 °C (hold 0.5 min) to 250 °C at 16 °C/min (hold 10 min)
Carrier Gas H₂, constant flow
Flow Rate: 2 mL/min
Detector FID @ 250 °C
 Constant Column +
Constant Make-up: 52 mL/min
Make-up Gas Type: N₂
Hydrogen flow: 40 mL/min
Air flow: 400 mL/min
Data Rate: 50 Hz
Instrument Agilent 7890A GC
Notes All peaks were identified using the NIST MS EI spectra library (2005).