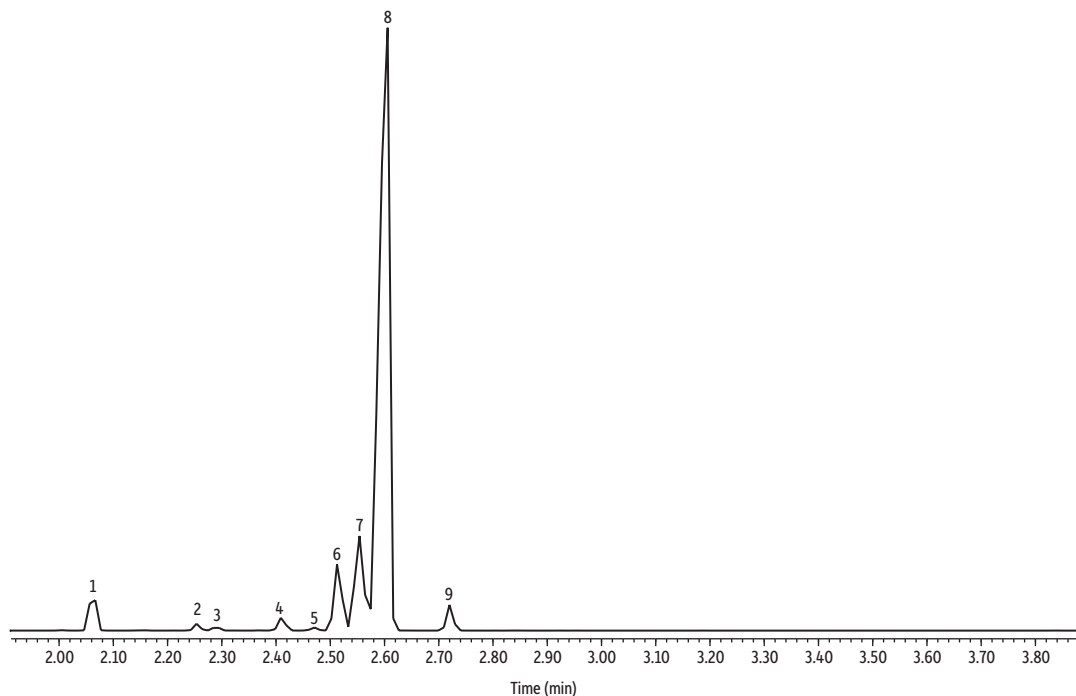


Eucalyptus Oil on Rxi-5Sil MS



GC_FF1314

| Peaks | ts (min) |
|---------------------------|----------|
| 1. α -Pinene | 2.066 |
| 2. β -Myrcene | 2.155 |
| 3. β -Pinene | 2.254 |
| 4. α -Phellandrene | 2.290 |
| 5. Terpinolene | 2.414 |
| 6. <i>p</i> -Cymene | 2.471 |
| 7. D-Limonene | 2.558 |
| 8. Eucalyptol | 2.602 |
| 9. γ -Terpinene | 2.720 |

Column Rxi-5Sil MS, 30 m, 0.25 mm ID, 0.25 μ m (cat.# 13623)
Sample Eucalyptus oil
Diluent: Acetone
Conc.: 5%
Injection
 Inj. Vol.: 1 μ L split (split ratio 100:1)
 Liner: Topaz 4.0 mm ID Precision inlet liner w/wool (cat.# 23305)
 Inj. Temp.: 250 °C
Oven
 Oven Temp.: 100 °C to 300 °C at 11 °C/min (hold 10 min)
Carrier Gas He, constant flow
Flow Rate: 1.31 mL/min
Detector MS
Mode: Scan
Scan Program:

| Group | Start Time (min) | Scan Range (amu) | Scan Rate (scans/sec) |
|-------|------------------|------------------|-----------------------|
| 1 | 1.00 | 35-500 | 5 |

Transfer Line Temp.: 300 °C
Analyzer Type: Quadrupole
Source Type: Inert
Source Temp.: 230 °C
Quad Temp.: 150 °C
Instrument Agilent 7890A GC & 5975C MSD
Notes All peaks were identified using the NIST MS EI spectra library (2005).