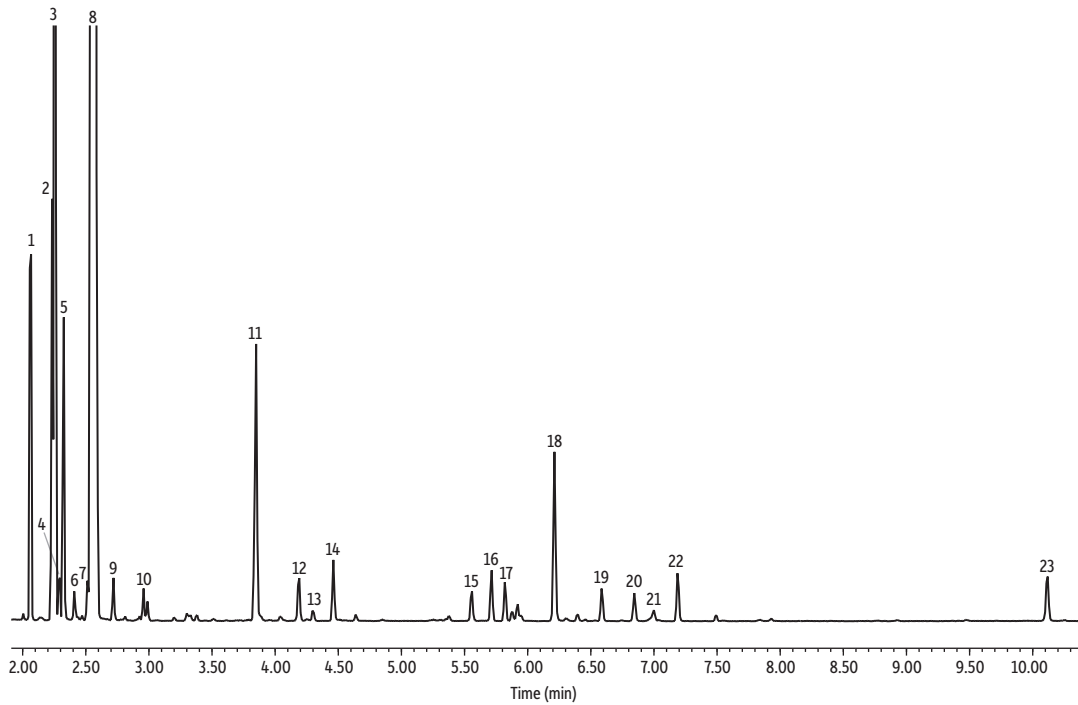


Grapefruit Oil on Rxi-5Sil MS



GC_FF1316

Peaks	tr (min)	Peaks	tr (min)
1. α -Pinene	2.062	12. Z-Citral	4.188
2. β -Phellandrene	2.233	13. Carvone	4.299
3. β -Myrcene	2.254	14. E-Citral	4.461
4. β -Pinene	2.291	15. Geranyl acetate	5.557
5. Octanal	2.325	16. Copaene	5.714
6. α -Phellandrene	2.409	17. β -Cubebene	5.820
7. <i>p</i> -Cymene	2.513	18. Caryophyllene	6.212
8. D-Limonene	2.564	19. α -Caryophyllene	6.587
9. γ -Terpinene	2.719	20. Germacrene D	6.845
10. Linalool	2.958	21. Bicyclogermacrene	6.999
11. Decanal	3.848	22. δ -Cadinene	7.188
		23. Nootkatone	10.116

Column Rxi-5Sil MS, 30 m, 0.25 mm ID, 0.25 μ m (cat.# 13623)
Sample Grapefruit oil
Diluent: Acetone
Conc.: 5%
Injection
Inj. Vol.: 1 μ L split (split ratio 100:1)
Liner: Topaz 4.0 mm ID Precision inlet liner w/wool (cat.# 23305)
Inj. Temp.: 250 °C
Oven
Oven Temp.: 100 °C to 300 °C at 11 °C/min (hold 10 min)
Carrier Gas He, constant flow
Flow Rate: 1.31 mL/min
Detector MS
Mode: Scan
Scan Program:

Group	Start Time (min)	Scan Range (amu)	Scan Rate (scans/sec)
1	1.00	35-500	5

Transfer Line Temp.: 300 °C
Analyzer Type: Quadrupole
Source Type: Inert
Source Temp.: 230 °C
Quad Temp.: 150 °C
Instrument Agilent 7890A GC & 5975C MSD
Notes All peaks were identified using the NIST MS EI spectra library (2005).