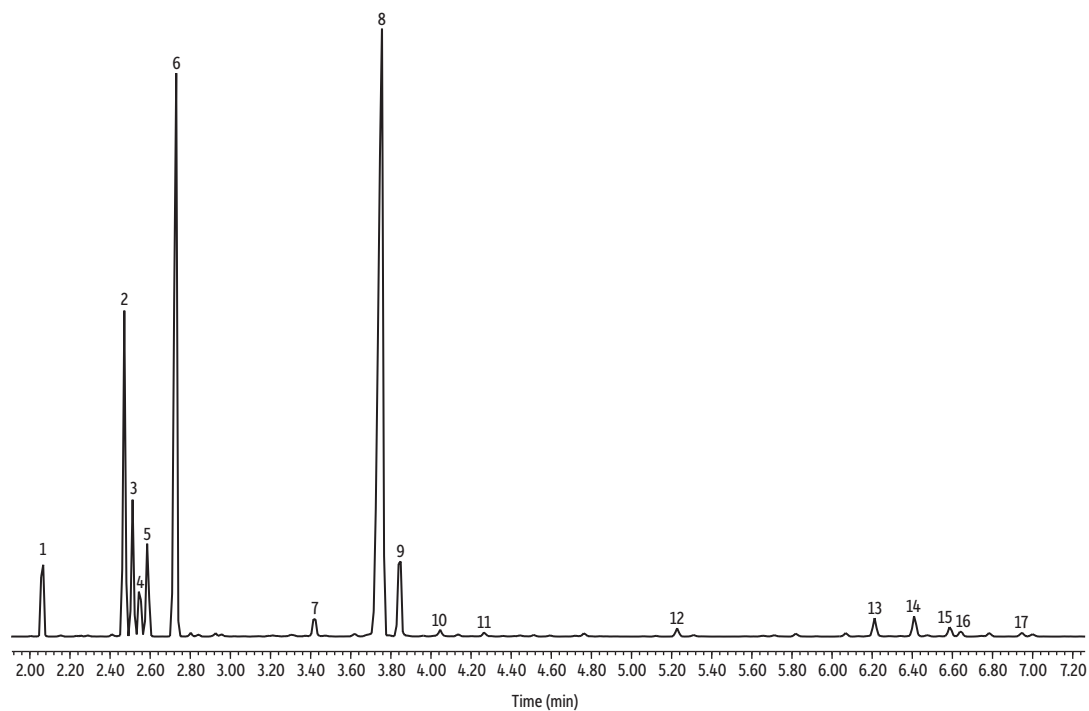


Tea Tree Oil on Rxi-5Sil MS



GC_FF1317

Peaks	ts (min)	Peaks	ts (min)
1. α -Pinene	2.067	9. α -Terpineol	3.849
2. Terpinolene	2.474	10. Nerol	4.046
3. <i>p</i> -Cymene	2.516	11. Geraniol	4.265
4. D-Limonene	2.552	12. γ -Elemene	5.228
5. Eucalyptol	2.591	13. Caryophyllene	6.217
6. γ -Terpinene	2.731	14. Aromadendrene	6.415
7. Pinocarveol	3.424	15. α -Caryophyllene	6.587
8. Terpinen-4-ol	3.756	16. Alloaromadendrene	6.642
		17. Ledene	6.947

Column Rxi-5Sil MS, 30 m, 0.25 mm ID, 0.25 μ m (cat.# 13623)
Sample Tea tree oil
Diluent: Acetone
Conc.: 5%
Injection
 Inj. Vol.: 1 μ L split (split ratio 100:1)
 Liner: Topaz 4.0 mm ID Precision inlet liner w/wool (cat.# 23305)
 Inj. Temp.: 250 °C
Oven
 Oven Temp.: 100 °C to 300 °C at 11 °C/min (hold 10 min)
Carrier Gas He, constant flow
 Flow Rate: 1.31 mL/min
Detector MS
 Mode: Scan
 Scan Program:

Group	Start Time (min)	Scan Range (amu)	Scan Rate (scans/sec)
1	1.00	35-500	5

Transfer Line Temp.: 300 °C
 Analyzer Type: Quadrupole
 Source Type: Inert
 Source Temp.: 230 °C
 Quad Temp.: 150 °C
Instrument Agilent 7890A GC & 5975C MSD
Notes All peaks were identified using the NIST MS EI spectra library (2005).