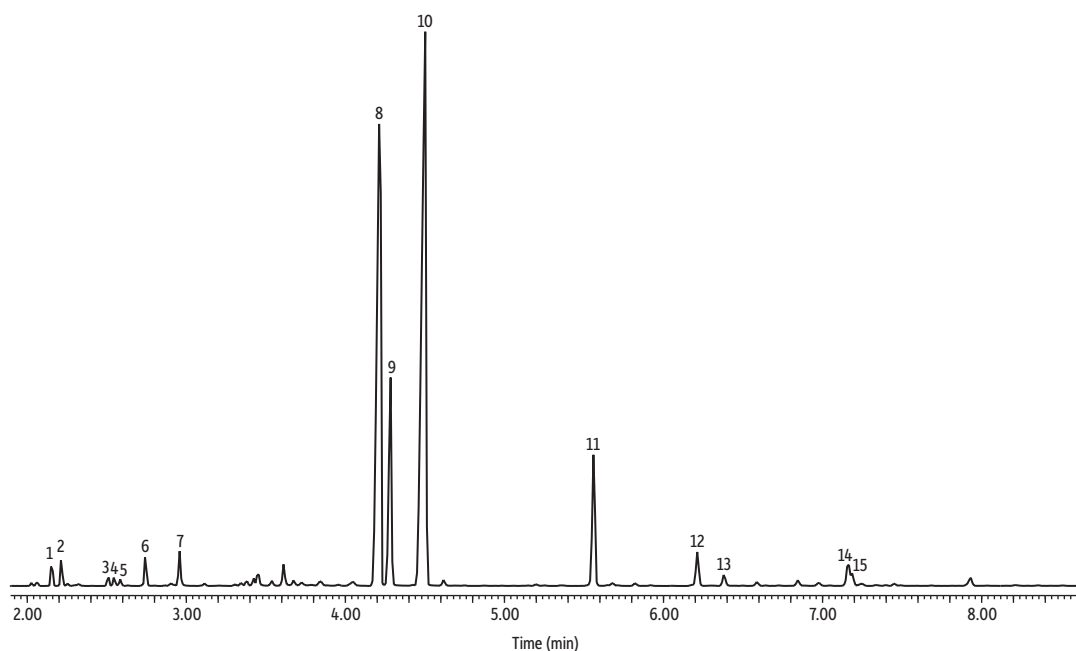


# Lemongrass Oil on Rxi-5Sil MS



GC\_FF1319

Peaks	tr (min)	Peaks	tr (min)
1. Camphene	2.158	8. Z-Citral	4.218
2. 6-Methyl-5-heptene-2-one	2.218	9. Geraniol	4.286
3. $\beta$ -Ocimene	2.510	10. E-Citral	4.501
4. D-Limonene	2.545	11. Geranyl acetate	5.564
5. $\alpha$ -Ocimene	2.585	12. Caryophyllene	6.218
6. 4-Nonanone	2.747	13. $\alpha$ -Caryophyllene	6.585
7. Linalool	2.963	14. $\alpha$ -Amorphene	7.161
		15. $\delta$ -Cadinene	7.186

**Column** Rxi-5Sil MS, 30 m, 0.25 mm ID, 0.25  $\mu$ m (cat.# 13623)  
**Sample** Lemongrass oil  
**Diluent:** Acetone  
**Conc.:** 5%  
**Injection**  
**Inj. Vol.:** 1  $\mu$ L split (split ratio 100:1)  
**Liner:** Topaz 4.0 mm ID Precision inlet liner w/wool (cat.# 23305)  
**Inj. Temp.:** 250 °C  
**Oven**  
**Oven Temp.:** 100 °C to 300 °C at 11 °C/min (hold 10 min)  
**Carrier Gas** He, constant flow  
**Flow Rate:** 1.31 mL/min  
**Detector** MS  
**Mode:** Scan  
**Scan Program:**

Group	Start Time (min)	Scan Range (amu)	Scan Rate (scans/sec)
1	1.00	35-500	5

**Transfer Line Temp.:** 300 °C  
**Analyzer Type:** Quadrupole  
**Source Type:** Inert  
**Source Temp.:** 230 °C  
**Quad Temp.:** 150 °C  
**Instrument** Agilent 7890A GC & 5975C MSD