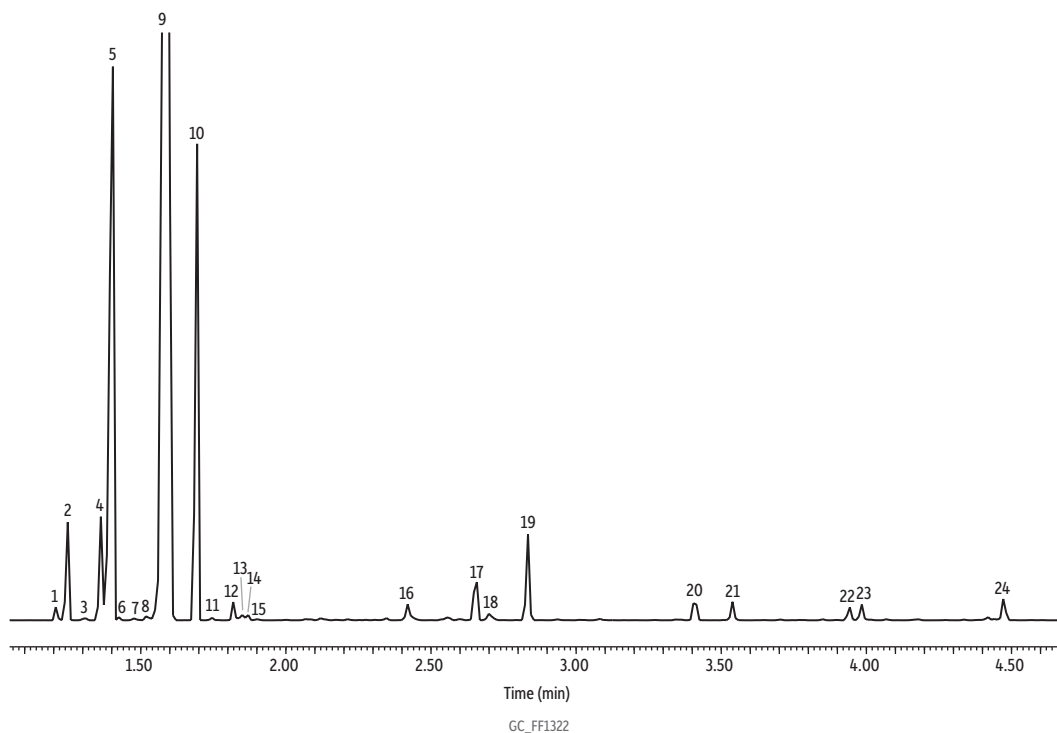


# Lemon Oil on Rxi-5Sil MS (20 m, 0.18 mm ID, 0.18 µm)



Peaks	tr (min)	Peaks	tr (min)
1. α-Thujene	1.208	13. Linalool	1.85
2. α-Pinene	1.253	14. Nonanal	1.87
3. Camphene	1.311	15. Citronellal	1.901
4. β-Myrcene	1.363	16. α-Terpineol	2.42
5. β-Pinene	1.402	17. Z-Citral	2.659
6. Octanal	1.412	18. Geraniol	2.699
7. α-Phellandrene	1.477	19. E-Citral	2.837
8. α-Terpinene	1.518	20. Neryl acetate	3.413
9. D-Limonene	1.591	21. Geranyl acetate	3.543
10. γ-Terpinene	1.697	22. β-Caryophyllene	3.942
11. cis-β-Terpineol	1.746	23. α-Bergamotene	3.984
12. Terpinolene	1.819	24. β-Bisabolene	4.477

**Column** Rxi-5Sil MS, 20 m, 0.18 mm ID, 0.18 µm (cat.# 43602)  
**Sample** Lemon oil  
**Diluent:** Acetone  
**Conc.:** 5%  
**Injection**  
**Inj. Vol.:** 1 µL split (split ratio 100:1)  
**Liner:** Topaz 4.0 mm ID Precision inlet liner w/wool (cat.# 23305)  
**Inj. Temp.:** 250 °C  
**Oven**  
**Oven Temp.:** 100 °C (hold 0.25 min) to 320 °C at 17.5 °C/min (hold 10 min)  
**Carrier Gas** He, constant flow  
**Flow Rate:** 1.01 mL/min  
**Detector** MS  
**Mode:** Scan  
**Scan Program:**

Group	Start Time (min)	Scan Range (amu)	Scan Rate (scans/sec)
1	1.00	35-500	5

**Transfer Line Temp.:** 300 °C  
**Analyzer Type:** Quadrupole  
**Source Type:** Inert  
**Source Temp.:** 230 °C  
**Quad Temp.:** 150 °C  
**Instrument** Agilent 7890A GC & 5975C MSD  
**Notes** All peaks were identified using the NIST MS EI spectra library (2005).