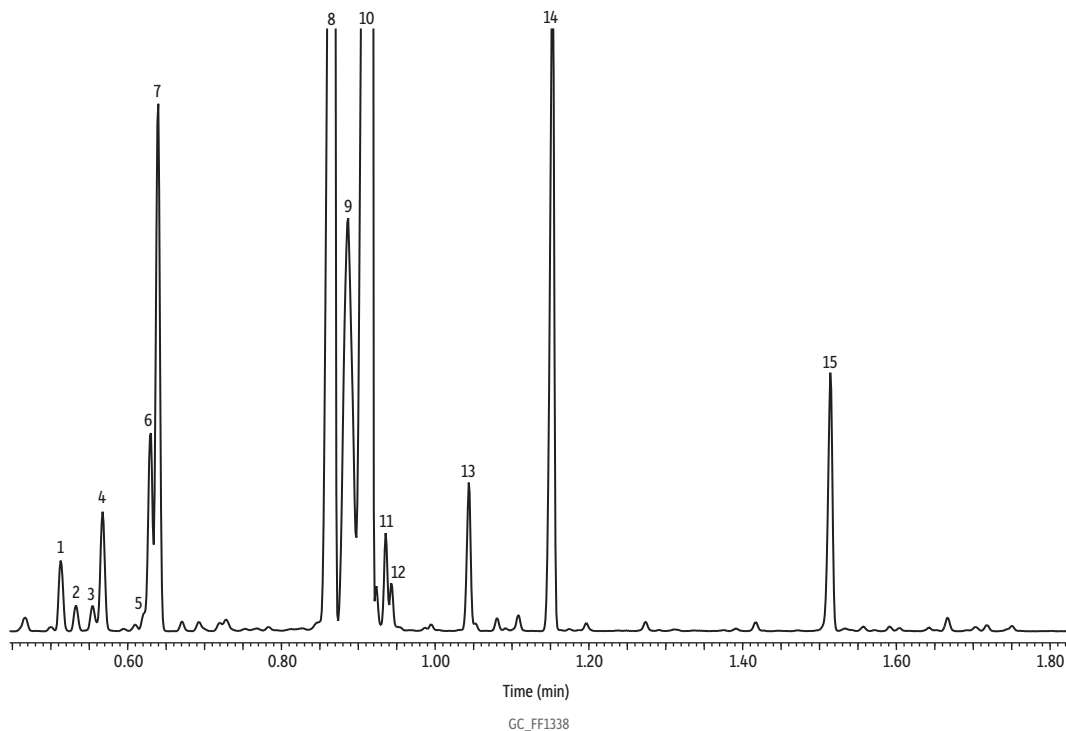


Peppermint Oil on Rxi-5Sil MS (10 m, 0.15 mm ID, 0.15 µm)



Peaks	tr (min)	Peaks	tr (min)
1. α-Pinene	0.514	8. Methone 1	0.867
2. 3-Methylcyclohexanone	0.533	9. Methone 2	0.887
3. β-Phellandrene	0.554	10. Menthol	0.917
4. β-Pinene	0.568	11. Isomenthol	0.936
5. p-Cymene	0.621	12. α-Terpineol	0.943
6. D-Limonene	0.630	13. Pulegone	1.044
7. Eucalyptol	0.639	14. Menthyl acetate	1.153
		15. Caryophyllene	1.515

**Column** Rxi-5Sil MS, 10 m, 0.15 mm ID, 0.15 µm (cat.# 43815)  
**Sample** Peppermint oil  
**Diluent:** Acetone  
**Conc.:** 1%  
**Injection**  
**Inj. Vol.:** 1 µL split (split ratio 100:1)  
**Liner:** Topaz 4.0 mm ID Precision inlet liner w/wool (cat.# 23305)  
**Inj. Temp.:** 250 °C  
**Oven**  
**Oven Temp.:** 100 °C to 300 °C at 45 °C/min to 320 °C at 30 °C/min (hold 5 min)  
**Carrier Gas** He, constant flow  
**Flow Rate:** 1.01 mL/min  
**Detector** MS  
**Mode:** Scan  
**Scan Program:**

Group	Start Time (min)	Scan Range (amu)	Scan Rate (scans/sec)
1	1.00	35-500	11

**Transfer Line Temp.:** 300 °C  
**Analyzer Type:** Quadrupole  
**Source Type:** Inert  
**Source Temp.:** 230 °C  
**Quad Temp.:** 150 °C  
**Instrument** Agilent 7890A GC & 5975C MSD  
**Notes** All peaks were identified using the NIST MS EI spectra library (2005).