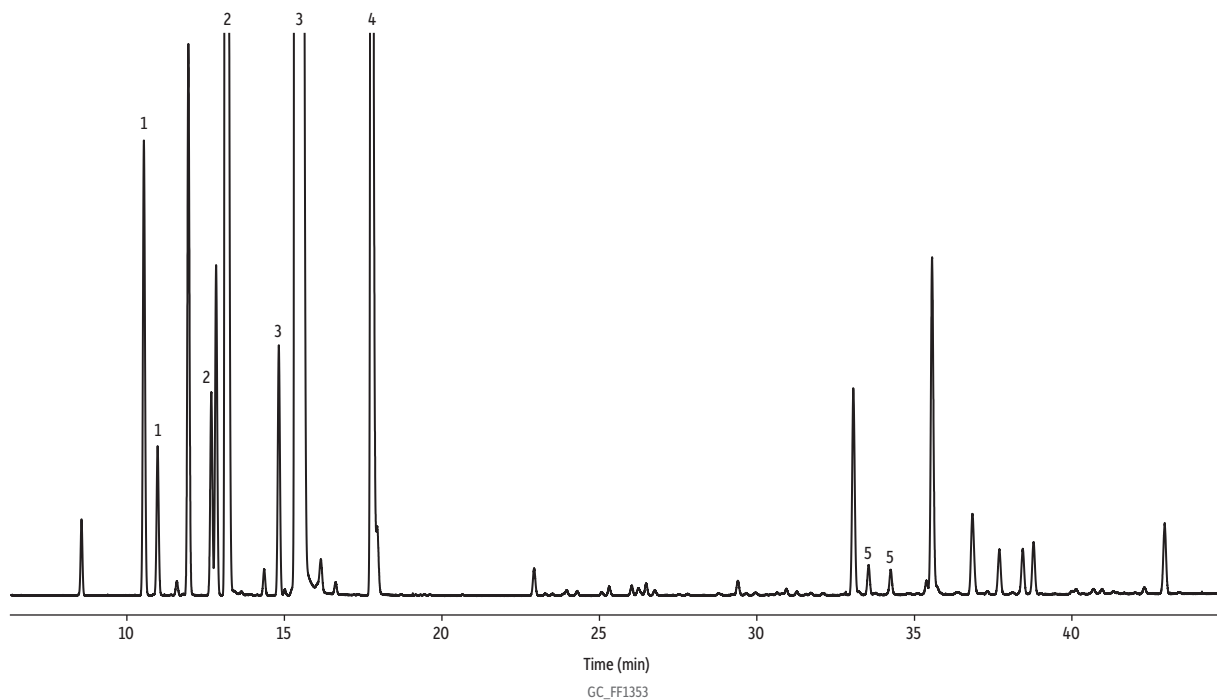


Lemon Oil on Rt-βDEXsm



Peaks	tr 1	tr 2
1. α-Pinene (±)	10.544	10.980
2. β-Pinene (±)	12.681	13.136
3. Limonene (L, D)	14.826	15.342
4. γ-Terpinene	17.764	-
5. α-Terpineol (±)	33.546	34.248

Column Rt-βDEXsm, 30 m, 0.32 mm ID, 0.25 μm (cat.# 13104)
Standard/Sample Lemon oil
Diluent: Acetone
Conc.: 5%
Injection
Inj. Vol.: 1 μL split (split ratio 100:1)
Liner: Topaz 4.0 mm ID Precision inlet liner w/ wool (cat.# 23305)
Inj. Temp.: 210 °C
Oven
Oven Temp.: 40 °C (hold 1 min) to 230 °C at 2 °C/min (hold 3 min)
Carrier Gas H₂, constant flow
Linear Velocity: 80 cm/sec
Detector FID @ 230 °C
Constant Column +
Constant Make-up: 51.4 mL/min
Make-up Gas Type: N₂
Hydrogen flow: 40 mL/min
Air flow: 400 mL/min
Data Rate: 50 Hz
Instrument Agilent 7890A GC
Sample Preparation Lemon oil (50 μL) was diluted with acetone (950 μL) in 2 mL, screw-thread vials (cat.# 21143), and capped with short-cap, screw-vial closures (cat.# 24495).