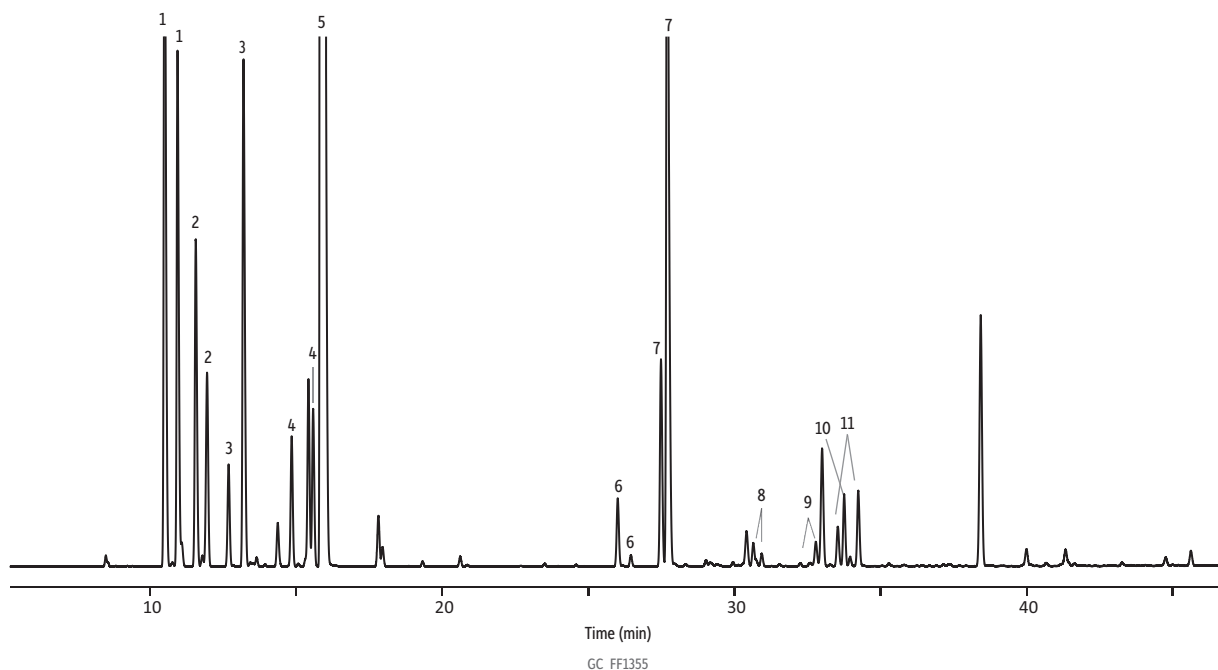


Rosemary Oil on Rt- β DEXsm



Peaks	tr 1	tr 2
1. α -Pinene (\pm)	10.500	10.941
2. Camphene (\pm)	11.566	11.952
3. β -Pinene (\pm)	12.690	13.200
4. Limonene (\pm)	14.850	15.585
5. Eucalyptol (1,8-cineole)	15.837	-
6. Linalool (\pm)	26.011	26.463
7. Camphor (\pm)	27.492	27.704
8. Terpinen-4-ol (\pm)	30.647	30.935
9. Isoborneol (\pm)	32.254	32.786
10. Borneol (\pm)	33.000	33.756
11. α -Terpineol (\pm)	33.539	34.237

Column Rt- β DEXsm, 30 m, 0.32 mm ID, 0.25 μ m (cat.# 13104)
Standard/Sample Rosemary oil
Diluent: Acetone
Conc.: 5%
Injection
Inj. Vol.: 1 μ L split (split ratio 100:1)
Liner: Topaz 4.0 mm ID Precision inlet liner w/ wool (cat.# 23305)
Inj. Temp.: 210 °C
Oven
Oven Temp.: 40 °C (hold 1 min) to 200 °C at 2 °C/min (hold 3 min)
Carrier Gas Hz, constant pressure
Linear Velocity: 80 cm/sec
Detector FID @ 230 °C
Constant Column +
Constant Make-up: 51.4 mL/min
Make-up Gas Type: N₂
Data Rate: 50 Hz
Instrument Agilent 7890A GC
Sample Preparation Rosemary oil (50 μ L) was diluted with acetone (950 μ L) in 2 mL, screw-thread vials (cat.# 21143), and capped with short-cap, screw-vial closures (cat.# 24495).