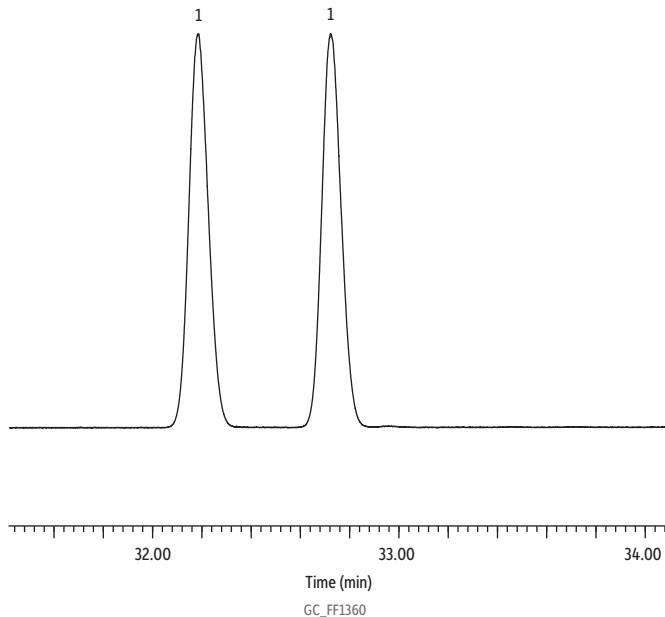


## (±) Isoborneol on Rt-βDEXsm



Peaks	tr 1	tr 2
1. (±) Isoborneol	32.185	32.724

**Column** Rt-βDEXsm, 30 m, 0.32 mm ID, 0.25 μm (cat.# 13104)

**Standard/Sample** (±) Isoborneol

**Diluent:** Acetone

**Conc.:** 1000 μg/mL

**Injection**

**Inj. Vol.:** 1 μL split (split ratio 100:1)

**Liner:** Topaz 4.0 mm ID Precision inlet liner w/ wool (cat.# 23305)

**Inj. Temp.:** 210 °C

**Oven**

**Oven Temp.:** 40 °C (hold 1 min) to 230 °C at 2 °C/min (hold 3 min)

**Carrier Gas** Hz, constant flow

**Linear Velocity:** 80 cm/sec @ 40 °C

**Detector** FID @ 230 °C

**Constant Column**

**+ Constant**

**Make-up:** 51.4 mL/min

**Make-up Gas Type:** N<sub>2</sub>

**Hydrogen flow:** 40 mL/min

**Air flow:** 400 mL/min

**Data Rate:** 50 Hz

**Instrument** Agilent 7890A GC

**Sample**

**Preparation**

(±) Isoborneol (2% solution) was dissolved in acetone to a final concentration of 1000 ppm in 2 mL, screw-thread vials (cat.# 21143), and capped with short-cap, screw-vial closures (cat.# 24495).

**Notes**

Complete enantiomeric resolution of (±) isoborneol (R = 3.7).