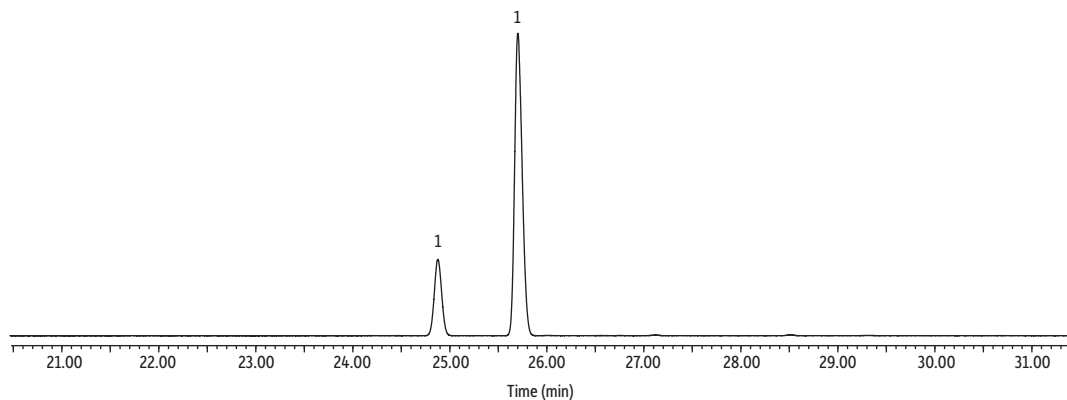


# (±) Menthone on Rt-βDEXse



GC\_FF1365

Peaks	tr 1	tr 2
1. (±) Menthone	24.877	25.702

**Column** Rt-βDEXse, 30 m, 0.32 mm ID, 0.25 μm (cat.# 13106)  
**Standard/Sample** (±) Menthone  
**Diluent:** Acetone  
**Conc.:** 920 μg/mL  
**Injection**  
**Inj. Vol.:** 1 μL split (split ratio 100:1)  
**Liner:** Topaz 4.0 mm ID Precision inlet liner w/ wool (cat.# 23305)  
**Inj. Temp.:** 210 °C  
**Oven**  
**Oven Temp.:** 40 °C (hold 1 min) to 230 °C at 2 °C/min (hold 3 min)  
**Carrier Gas** Hz, constant flow  
**Linear Velocity:** 80 cm/sec @ 40 °C  
**Detector** FID @ 230 °C  
**Constant Column**  
**+ Constant Make-up:** 51.4 mL/min  
**Make-up Gas Type:** N<sub>2</sub>  
**Hydrogen flow:** 40 mL/min  
**Air flow:** 400 mL/min  
**Data Rate:** 50 Hz  
**Instrument** Agilent 7890A GC  
**Sample Preparation** (±) Menthone (neat) was dissolved in acetone to a final concentration of 920 ppm in 2 mL, screw-thread vials (cat.# 21143), and capped with short-cap, screw-vial closures (cat.# 24495).  
**Notes** Enantiomeric resolution of (±) menthone was 5.7.