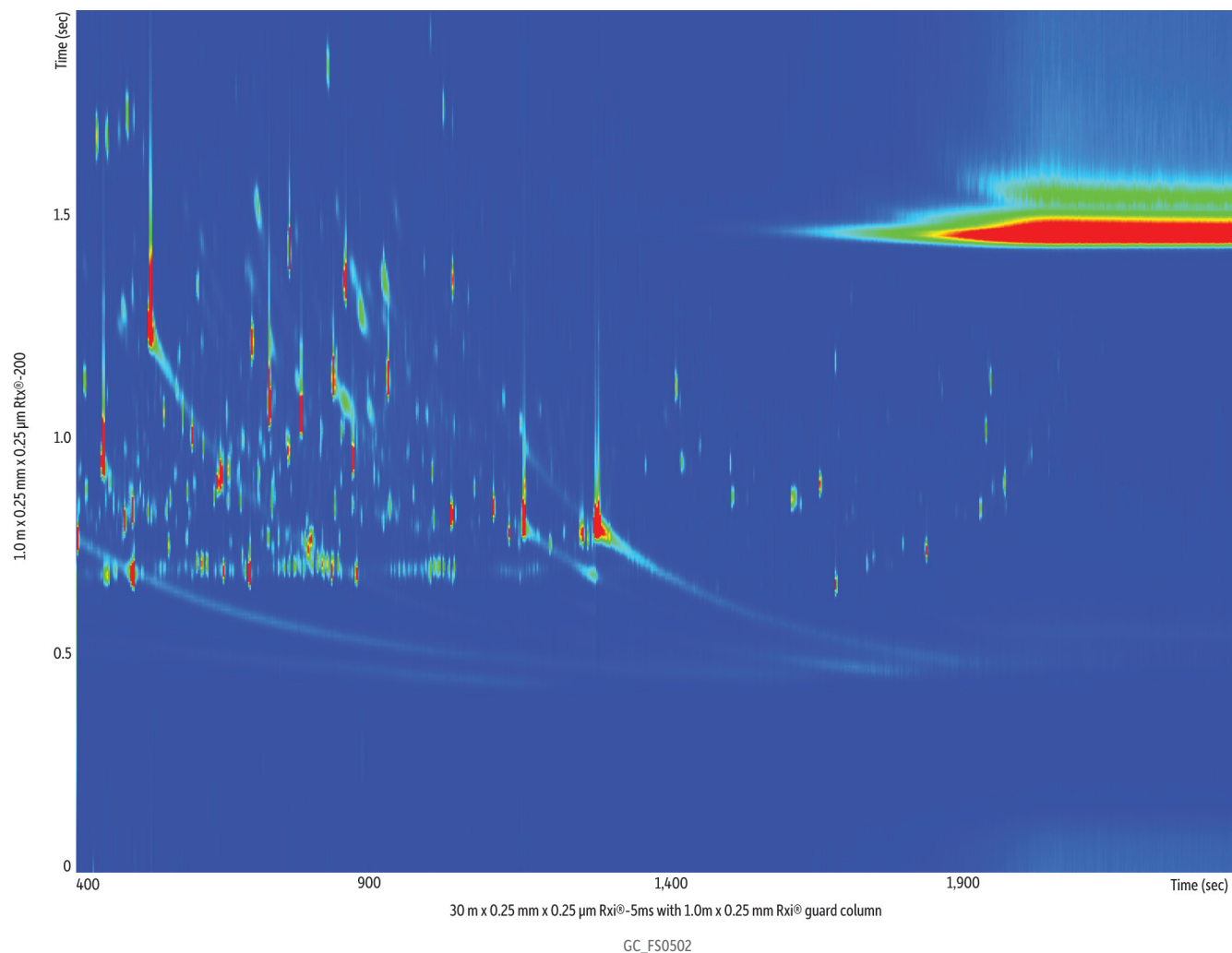


GCxGC-TOFMS Contour Plot of Unfortified Berry Tea



Column	Rxi®-5ms 30 m, 0.25 mm ID, 0.25 μ m (cat.# 13423) with Rxi® guard column 1.0 m, 0.25 mm ID (cat.# 10029) Rtx®-200 1.0 m, 0.25 mm ID, 0.25 μ m (cat.# 15124)	Second Dimension	
Sample	Berry tea QuEChERS internal standard mix for GC-MS analysis (cat.# 33267) Acetonitrile	Separation Time:	2.00 sec
Diluent:		Hot Pulse Time:	0.60 sec
Injection		Cool Time between Stages:	0.40 sec
Inj. Vol.:	1.0 μ L splitless (hold 1.0 min)	Detector	MS
Liner:	Premium 4 mm single taper (cat.# 23302.1)	Mode:	
Inj. Temp.:	250 °C	Transfer Line Temp.:	320 °C
Purge Flow:	40 mL/min	Analyzer Type:	TOF
Oven		Source Temp.:	225 °C
Oven Temp.:	Rxi®-5ms: 70 °C (hold 1.0 min) to 330 °C at 8.0 °C/min (hold 6.5 min) Rtx®-200: 75 °C (hold 1.0 min) to 335 °C at 8.0 °C/min (hold 6.5 min) He, corrected constant flow (1.4 mL/min)	Electron Energy:	70 eV
Carrier Gas		Mass Defect:	-20 mu/100 u
Modulation		Ionization Mode:	EI
Modulator Temp. Offset:	20 °C	Acquisition Range:	45-550 amu
		Spectral Acquisition Rate:	100 spectra/sec
		Instrument	LECO Pegasus® 4D GCxGC-TOFMS
		Notes	All column connections were made with an SGE® SilTite® μ -union.