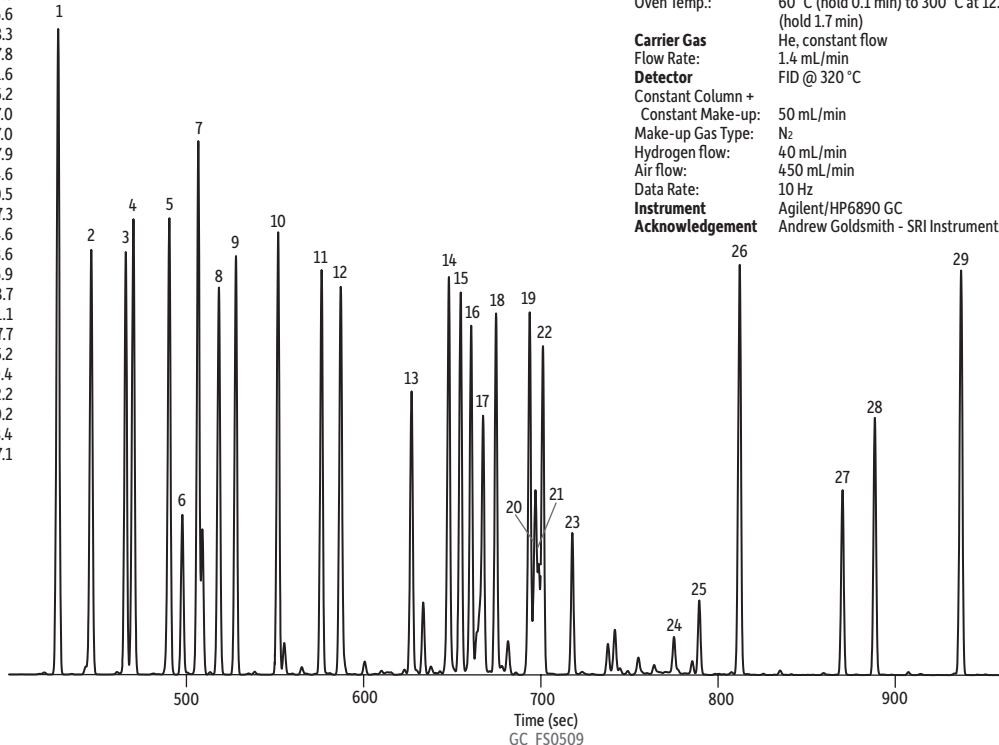


# Medical Cannabis Terpenes on Rxi®-624Sil MS

Peaks	tr (min)
1. alpha-Pinene	427.5
2. Camphene	446.2
3. Myrcene	465.7
4. beta-Pinene	470.0
5. delta-3-Carene	490.3
6. alpha-Terpinene	497.7
7. Limonene	506.6
8. 1,8-Cineole	518.3
9. gamma-Terpinene	527.8
10. Terpinolene	551.6
11. Linalool	576.2
12. Fenchone	587.0
13. Isopulegol	627.0
14. Menthol	647.9
15. Borneol	654.6
16. alpha-Terpineol	660.5
17. Dihydrocarveol	667.3
18. Citronellol	674.6
19. Geraniol	693.6
20. 2-Piperidone	696.9
21. Citral 1	698.7
22. Pulegone	701.1
23. Citral 2	717.7
24. Citral 3	775.2
25. Citral 4	789.4
26. beta-Caryophyllene	812.2
27. Nerolidol 1	870.2
28. Nerolidol 2	888.4
29. Caryophyllene oxide	937.1



**Column** Rxi®-624Sil MS, 30 m, 0.25 mm ID, 1.40 µm (cat.# 13868)

**Injection**  
Inj. Vol.: 1 µL split (split ratio 10:1)  
Liner: Premium 4 mm Precision w/wool (cat.# 23305.5)  
Inj. Temp.: 250 °C

**Oven**  
Oven Temp.: 60 °C (hold 0.1 min) to 300 °C at 12.5 °C/min (hold 1.7 min)

**Carrier Gas**  
Flow Rate: He, constant flow  
1.4 mL/min

**Detector**  
FID @ 320 °C

Constant Column +  
Constant Make-up: 50 mL/min  
Make-up Gas Type: N<sub>2</sub>  
Hydrogen flow: 40 mL/min  
Air flow: 450 mL/min  
Data Rate: 10 Hz

**Instrument**  
Agilent/HP6890 GC

**Acknowledgement**  
Andrew Goldsmith - SRI Instruments