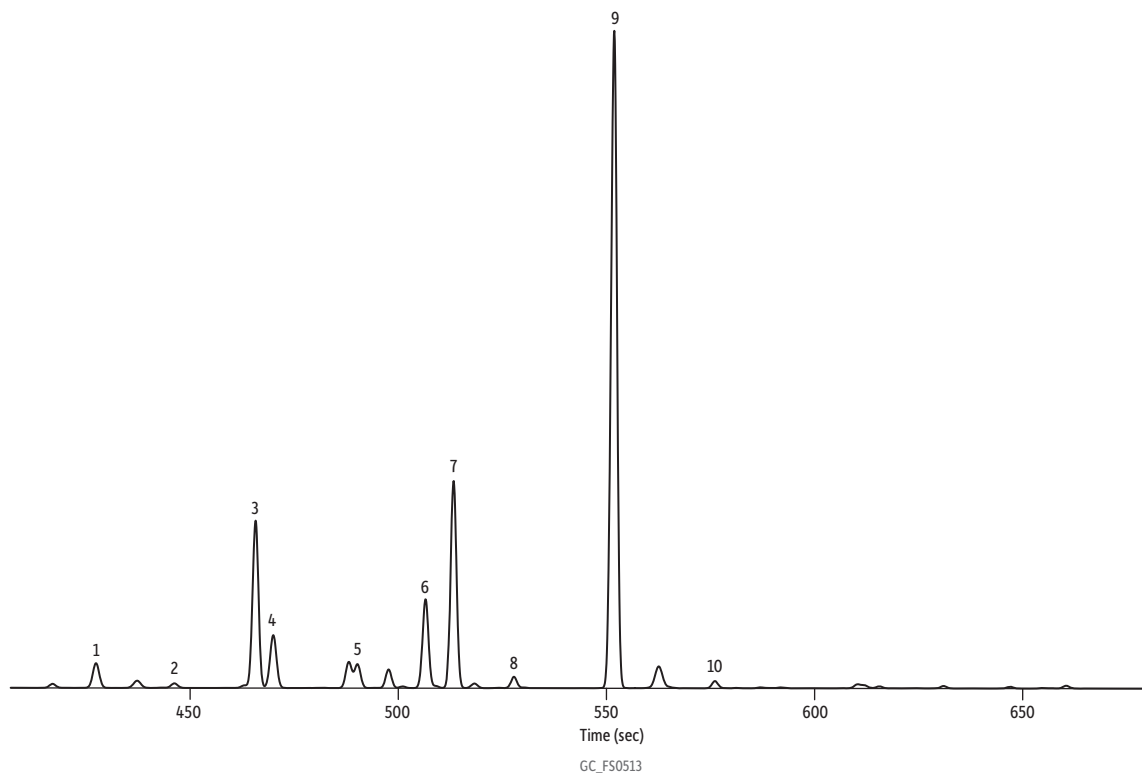


Terpenes in Blueberry Jack Medical Cannabis on Rxi-624Sil MS



Peaks	tr (sec)
1. alpha-Pinene	427.5
2. Camphene	446.2
3. Myrcene	465.7
4. beta-Pinene	470.0
5. delta-3-Carene	490.3
6. Limonene	506.6
7. Ocimene 2	513.3
8. gamma-Terpinene	527.8
9. Terpinolene	551.6
10. Linalool	576.2

Column Rxi-624-Sil MS, 30 m, 0.25 mm ID, 1.40 µm (cat.# 13868)

Injection

Inj. Vol.: 1 µL split (split ratio 10:1)
 Liner: Premium 4 mm Precision w/wool (cat.# 23305)
 Inj. Temp.: 250 °C

Oven

Oven Temp.: 60 °C (hold 0.1 min) to 300 °C at 12.5 °C/min (hold 1.7 min)

Carrier Gas

He, constant flow

Flow Rate:

1.4 mL/min

Detector

FID @ 320 °C

Constant Column +

Constant Make-up: 50 mL/min

Make-up Gas Type:

N₂

Hydrogen flow:

40 mL/min

Air flow:

450 mL/min

Data Rate:

10 Hz

Instrument

Agilent/HP6890 GC

Sample Preparation

The sample was collected by blowing compressed air over medical cannabis and purging that air through methanol via an impinger setup.

Acknowledgement

Andrew Goldsmith - SRI Instruments