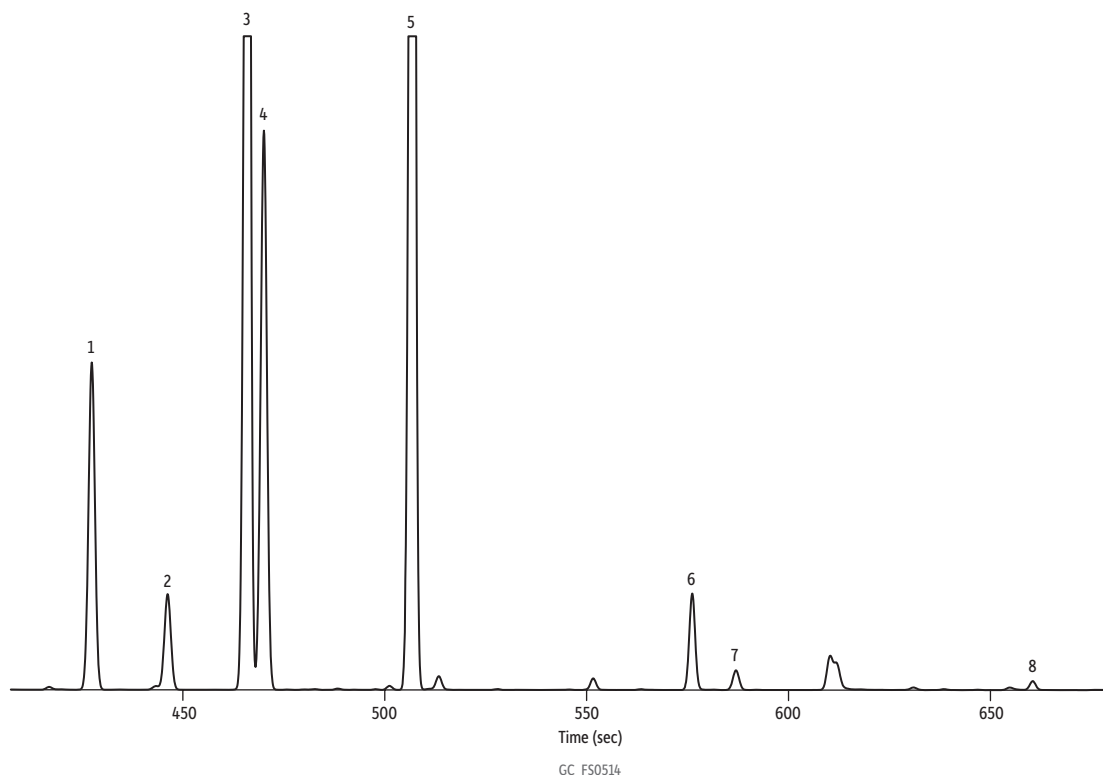


# Terpenes in Kryptonite Medical Cannabis on Rxi-624Sil MS



Peaks	tr (sec)
1. alpha-Pinene	427.5
2. Camphene	446.2
3. Myrcene	465.7
4. beta-Pinene	470.0
5. Limonene	506.6
6. Linalool	576.2
7. Fenchone	587.0
8. alpha-Terpineol	660.5

<b>Column</b>	Rxi-624Sil MS, 30 m, 0.25 mm ID, 1.40 µm (cat.# 13868)
<b>Injection</b>	
Inj. Vol.:	1 µL split (split ratio 10:1)
Liner:	Premium 4 mm Precision w/wool (cat.# 23305)
Inj. Temp.:	250 °C
<b>Oven</b>	
Oven Temp.:	60 °C (hold 0.1 min) to 300 °C at 12.5 °C/min (hold 1.7 min)
<b>Carrier Gas</b>	He, constant flow
Flow Rate:	1.4 mL/min
<b>Detector</b>	FID @ 320 °C
Constant Column	
+ Constant Make-up:	50 mL/min
Make-up Gas Type:	N <sub>2</sub>
Hydrogen flow:	40 mL/min
Air flow:	450 mL/min
Data Rate:	10 Hz
<b>Instrument</b>	Agilent/HP6890 GC
<b>Sample Preparation</b>	The sample was collected by blowing compressed air over medical cannabis and purging that air through methanol via an impinger setup.
<b>Acknowledgement</b>	Andrew Goldsmith - SRI Instruments