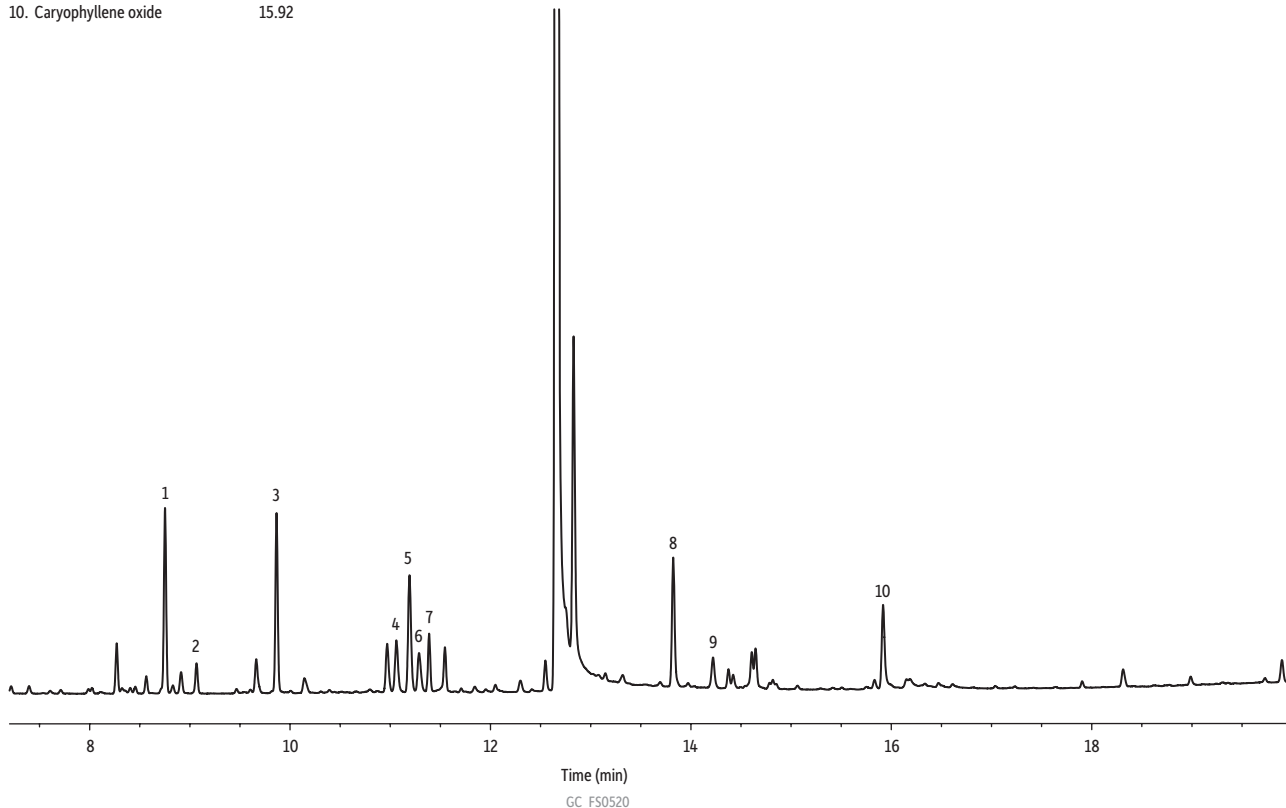


# Terpene Profile of Thyme on Rxi-624Sil MS by FET-HS-GC

Peaks	t <sub>R</sub> (min)
1. <i>p</i> -Cymene	8.75
2. $\gamma$ -Terpinene	9.06
3. Linalool	9.87
4. dl-Menthol	11.08
5. Borneol	11.19
6. $\alpha$ -Terpineol	11.29
7. Dihydrocarveol	11.40
8. $\beta$ -caryophyllene	13.83
9. $\alpha$ -Humulene	14.21
10. Caryophyllene oxide	15.92



**Column** Rxi-624Sil MS, 30 m, 0.25 mm ID, 1.40  $\mu$ m (cat.# 13868)  
**Sample** Conc.: 20 mg of ground thyme  
**Injection** headspace-loop split (split ratio 10:1)  
**Liner:** Premium 1.0 mm ID straight inlet liner (cat.# 23333)  
**Headspace-Loop**  
**Inj. Port** Temp.: 250 °C  
**Instrument:** Tekmar HT-3  
**Inj. Time:** 1.0 min  
**Transfer Line** Temp.: 160 °C  
**Valve Oven** Temp.: 160 °C  
**Needle Temp.:** 140 °C  
**Sample Temp.:** 140 °C  
**Sample Equil.** Time: 30.0 min  
**Vial Pressure:** 20 psi  
**Loop Pressure:** 15 psi

**Oven** Oven Temp.: 60 °C (hold 0.10 min) to 300 °C at 12.50 °C/min (hold 3.0 min)  
**Carrier Gas** He, constant flow  
**Linear Velocity:** 33 cm/sec  
**Detector** FID @ 320 °C  
**Make-up Gas** Make-up Gas Flow Rate: 45 mL/min  
**Make-up Gas** Type: N<sub>2</sub>  
**Hydrogen flow:** 40 mL/min  
**Air flow:** 450 mL/min  
**Data Rate:** 20 Hz  
**Instrument** Agilent/HP6890 GC