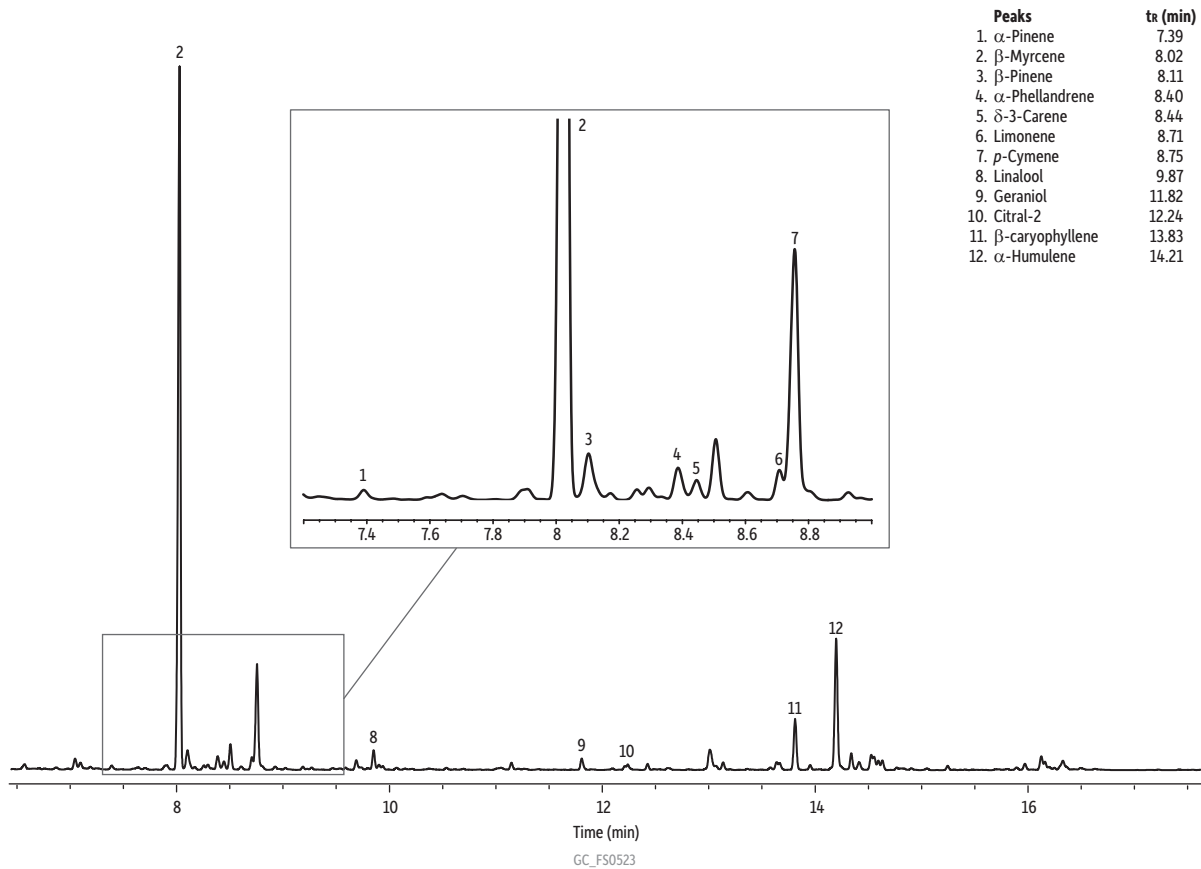


Terpene Profile of Cascade Hops on Rxi-624Sil MS by FET-HS-GC



Column Rxi-624Sil MS, 30 m, 0.25 mm ID, 1.40 μ m (cat.# 13868)
Sample
 Conc.: 10 mg of ground Cascade hops
Injection headspace-loop split (split ratio 10:1)
 Liner: Premium 1.0 mm ID straight inlet liner (cat.# 23333)
Headspace-Loop
 Inj. Port Temp.: 250 °C
 Instrument: Tekmar HT-3
 Inj. Time: 1.0 min
 Transfer Line
 Temp.: 160 °C
 Valve Oven Temp.: 160 °C
 Needle Temp.: 140 °C
 Sample Temp.: 140 °C
 Sample Equil. Time: 30.0 min
 Vial Pressure: 20 psi
 Loop Pressure: 15 psi
Oven
 Oven Temp.: 60 °C (hold 0.10 min) to 300 °C at 12.50 °C/min (hold 3.0 min)
Carrier Gas
 He, constant flow
 Linear Velocity: 33 cm/sec
Detector
 FID @ 320 °C
 Make-up Gas
 Flow Rate: 45 mL/min
 Make-up Gas Type: N₂
 Hydrogen flow: 40 mL/min
 Air flow: 450 mL/min
 Data Rate: 20 Hz
Instrument
 Agilent/HP6890 GC
Notes
 For qualitative purposes only.