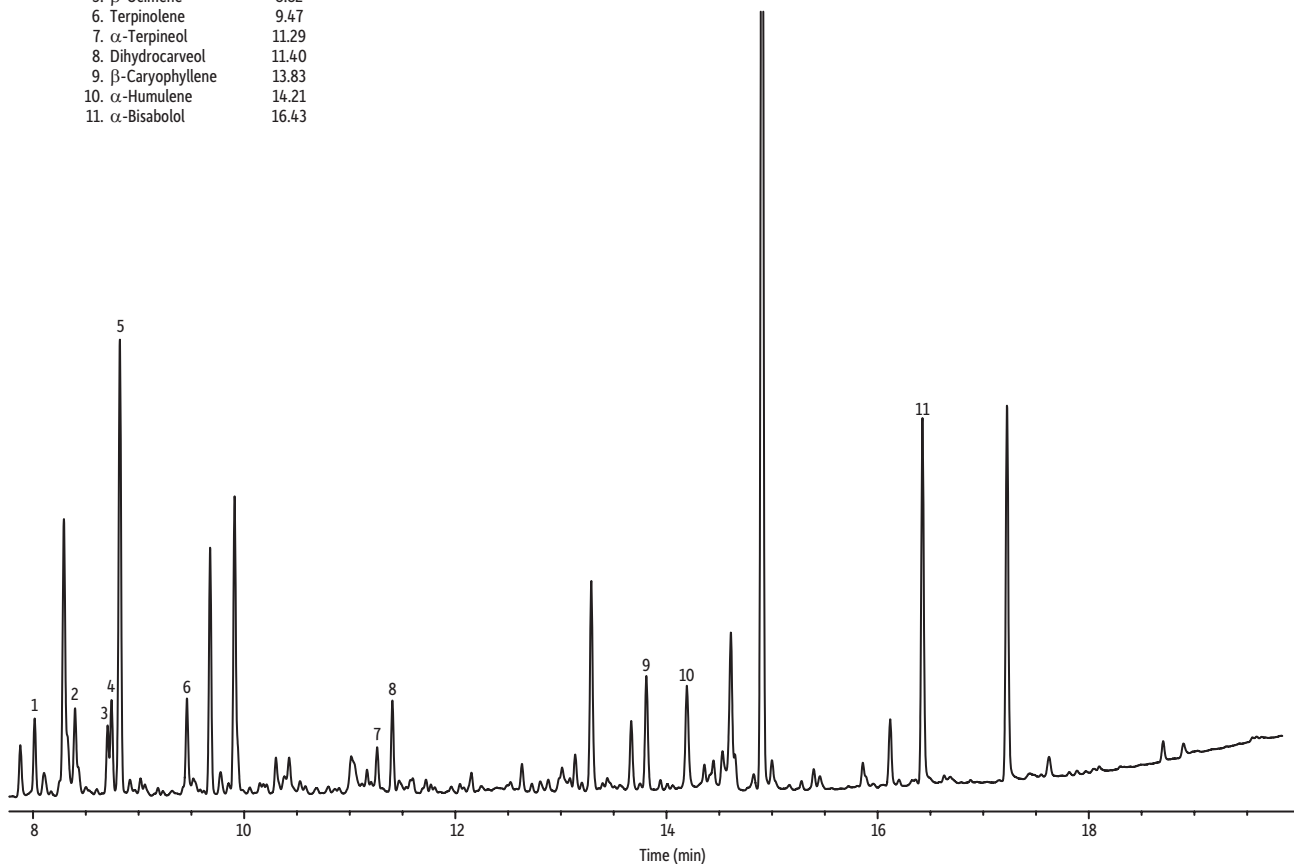


Terpene Profile of Parsley on Rxi®-624Sil MS by FET-HS-GC

Peaks	tr (min)
1. β-Myrcene	8.02
2. α-Phellandrene	8.40
3. Limonene	8.71
4. p-Cymene	8.75
5. β-Ocimene	8.82
6. Terpinolene	9.47
7. α-Terpineol	11.29
8. Dihydrocarveol	11.40
9. β-Caryophyllene	13.83
10. α-Humulene	14.21
11. α-Bisabolol	16.43



GC_FS0524

Column Rxi®-624Sil MS, 30 m, 0.25 mm ID, 1.40 μm (cat.# 13868)
Sample
Conc.: 10 mg of ground parsley
Injection headspace-loop split (split ratio 10:1)
Liner: Premium 1.0 mm ID straight inlet liner (cat.# 23333.1)
Headspace-Loop
Inj. Port Temp.: 250 °C
Instrument: Tekmar HT-3
Inj. Time: 1.0 min
Transfer Line Temp.: 160 °C
Valve Oven Temp.: 160 °C
Needle Temp.: 140 °C
Sample Temp.: 140 °C
Sample Equil. Time: 30.0 min
Vial Pressure: 20 psi
Loop Pressure: 15 psi

Oven
Oven Temp.: 60 °C (hold 0.10 min) to 300 °C at 12.50 °C/min (hold 3.0 min)
Carrier Gas He, constant flow
Linear Velocity: 33 cm/sec
Detector FID @ 320 °C
Make-up Gas
Flow Rate: 45 mL/min
Make-up Gas Type: N₂
Hydrogen flow: 40 mL/min
Air flow: 450 mL/min
Data Rate: 20 Hz
Instrument Agilent/HP6890 GC