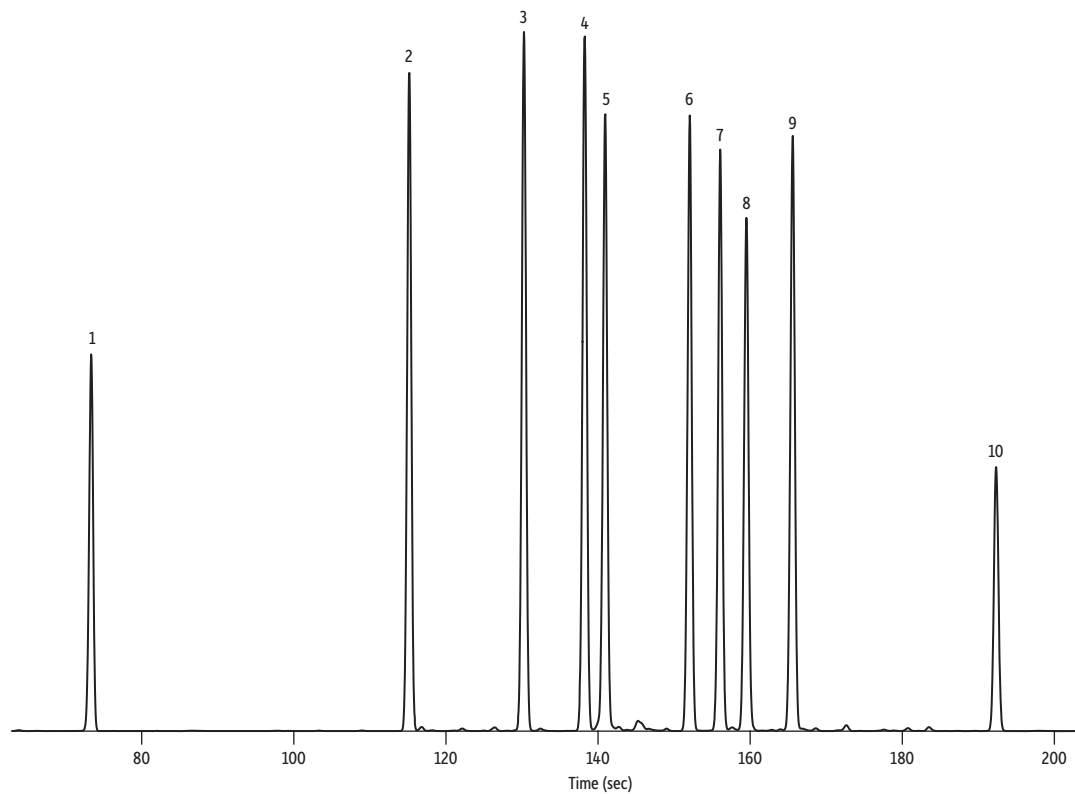


# Medical Cannabis Cannabinoids and Internal Standards on Rxi®-35Sil MS

Peaks	Conc. (µg/mL)	tr (sec)
1. Phencyclidine (IS)	50	73.4
2. Cannabidivarin	100	115.2
3. Tetrahydrocannabivarin	100	130.3
4. Cannabichromene	100	138.3
5. Cannabidiol	100	150.0
6. Δ8-Tetrahydrocannabinol	100	152.1
7. Δ9-Tetrahydrocannabinol	100	156.1
8. Cannabigerol	100	159.5
9. Cannabinol	100	165.6
10. Prazepam (IS)	50	192.4



GC\_FS0549

**Column** Rxi®-35Sil MS, 15 m, 0.25 mm ID, 0.25 µm (cat.# 13820)  
**Sample** Phencyclidine (cat.# 34027)  
 Cannabichromene (CBC) (cat.# 34092)  
 Cannabinoids standard (cat.# 34014)  
 delta-8-Tetrahydrocannabinol (THC) (cat.# 34090)  
 Cannabigerol (CBG) (cat.# 34091)  
 Prazepam (cat.# 34055)

**Injection**  
 Inj. Vol.: 1 µL split (split ratio 20:1)  
 Liner: Premium 4 mm Precision® liner w/wool (cat.# 23305.5)  
 Inj. Temp.: 250 °C  
**Oven**  
 Oven Temp.: 190 °C (hold 0.1 min) to 330 °C at 35 °C/min (hold 0.9 min)

**Carrier Gas** H<sub>2</sub>, constant flow  
 Flow Rate: 2.5 mL/min  
**Detector** FID @ 350 °C  
 Constant Column +  
 Constant Make-up: 50 mL/min  
 Make-up Gas  
 Type: N<sub>2</sub>  
 Hydrogen flow: 40 mL/min  
 Air flow: 450 mL/min  
 Data Rate: 20 Hz  
**Instrument** Agilent/HP6890 GC  
**Notes** Cannabidivarin and tetrahydrocannabivarin standards were obtained from BOC Sciences.