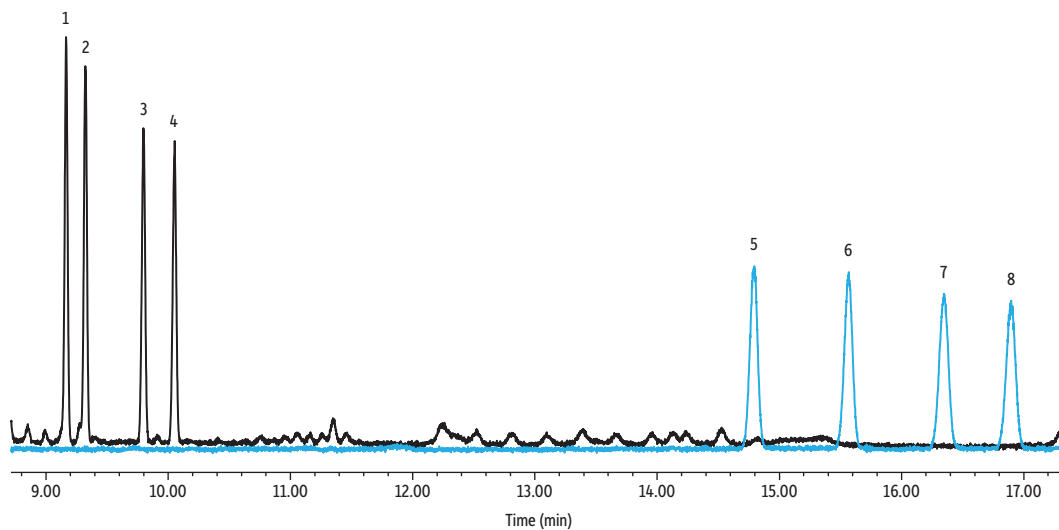


Sugar alditol acetates on Rtx-225



GC_FS0577

Peaks	tr (min)
1. Rhamnitol acetate	9.163
2. Fucitol acetate	9.322
3. Ribitol acetate	9.797
4. Arabitol acetate	10.052
5. Glucitol acetate	14.792
6. Mannitol acetate	15.562
7. Galactitol acetate	16.35
8. Inositol acetate	16.883

Column Rtx-225, 30 m, 0.25 mm ID, 0.25 µm (cat.# 14023)
Standard/Sample Alditol Acetate Mixture-1 (Matreya, LLC, cat.#1124)
 Alditol Acetate Mixture-2 (Matreya, LLC, cat.#1125)
Diluent: Chloroform
Conc.: 50,000 µg/mL
Injection
Inj. Vol.: 1 µL split (split ratio 400:1)
Liner: Topaz 4.0 mm ID Precision Inlet Liner w/ Wool (cat.# 23305)
Inj. Temp.: 250 °C
Oven
Oven Temp.: 40 °C (hold 0.5 min) to 220 °C at 30 °C/min (hold 15 min)
Carrier Gas He, constant flow
Flow Rate: 1.4 mL/min
Linear Velocity: 42.906 cm/sec @ 40 °C
Dead Time: 1.21 min @ 40 °C
Detector MS
Mode: Scan
Scan Program:

Group	Start Time (min)	Scan Range (amu)	Scan Rate (scans/sec)
1	1.5	50-750	7.5

Transfer Line Temp.: 280 °C
Analyzer Type: Quadrupole
Source Type: Extractor
Source Temp.: 280 °C
Quad Temp.: 150 °C
Electron Energy: 978 eV
Solvent Delay Time: 1.5 min
Tune Type: PFTBA
Ionization Mode: EI
Instrument Agilent 7890B GC & 5977A MSD