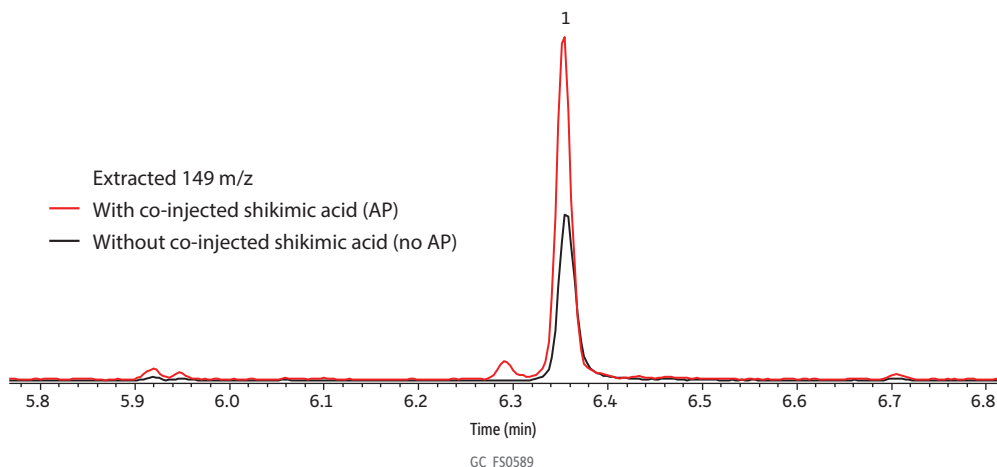


Captan in Solvent with and without Analyte Protectant



Peaks	Retention Time (min)
1. Captan	6.36

Column Low-pressure GC column kit (factory-coupled restrictor column [5 m x 0.18 mm ID] and Rtx-5ms analytical column [15 m, 0.53 mm ID, 1 µm plus 1 m integrated transfer line on the outlet end]) (cat.# 11800)

Standard/Sample Captan in QuEChERS performance standards kit (cat.# 31152)
Diluent: Acetonitrile
Conc.: 10 µg/mL

Injection
Inj. Vol.: 1 µL split (split ratio 10:1)
Liner: Topaz 4.0 mm ID single taper inlet liner w/ wool (cat.# 23447)
Inj. Temp.: 250 °C

Oven
Oven Temp.: 70 °C (hold 1 min) to 320 °C at 35 °C/min (hold 2 min)

Carrier Gas He, constant flow

Flow Rate: 2 mL/min

Detector MS
Mode: Scan

Group	Start Time (min)	Scan Range (amu)	Scan Rate (scans/sec)
1	2.5	35-550	10

Transfer Line Temp.: 290 °C
Analyzer Type: Quadrupole
Source Temp.: 325 °C
Electron Energy: 70 eV
Tune Type: PFTBA
Ionization Mode: EI

Instrument Thermo Scientific TSQ 8000 Triple Quadrupole GC-MS

Sample Preparation The standard was diluted to 10 ppm in acetonitrile in a 2 mL short-cap, screw-thread vial (cat.# 21143) and capped with a short-cap, screw-vial closure (cat.# 24495).

Notes Injections were performed as sandwich co-injections with 1 µL shikimic acid (1 mg/mL in acetonitrile with 1% water) as an analyte protectant (with AP injection) or with acetonitrile as the control (without AP injection).