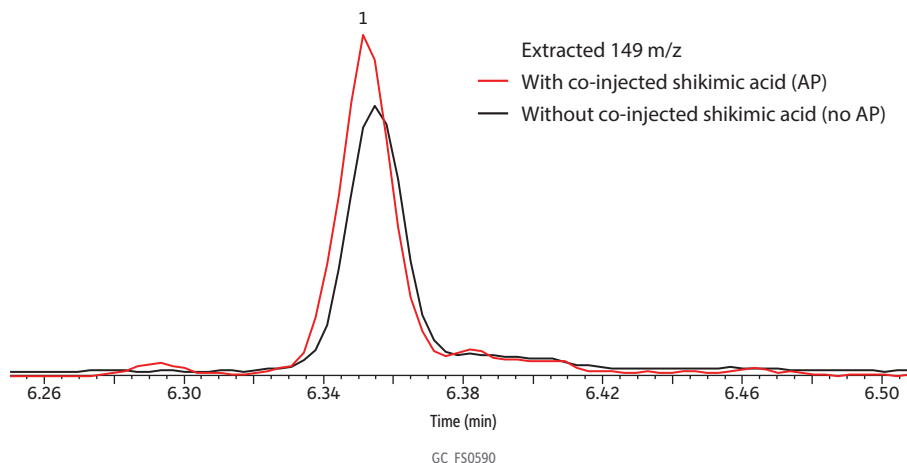


# Captan in Strawberry Extract with and without Analyte Protectant



Peaks	ts (min)
1. Captan	6.36

**Column** Low-pressure GC column kit (factory-coupled restrictor column [5 m x 0.18 mm ID] and Rtx-5ms analytical column [15 m, 0.53 mm ID, 1 µm plus 1 m integrated transfer line on the outlet end]) (cat.# 11800)

**Standard/Sample** Captan in QuEChERS performance standards kit (cat.# 31152)  
**Diluent:** Acetonitrile  
**Conc.:** 10 µg/mL

**Injection**  
**Inj. Vol.:** 1 µL split (split ratio 10:1)  
**Liner:** Topaz 4.0 mm ID single taper inlet liner w/ wool (cat.# 23447)  
**Inj. Temp.:** 250 °C

**Oven**  
**Oven Temp.:** 70 °C (hold 1 min) to 320 °C at 35 °C/min (hold 2 min)

**Carrier Gas** He, constant flow  
**Flow Rate:** 2 mL/min

**Detector** MS  
**Mode:** Scan

**Scan Program:**

Group	Start Time (min)	Scan Range (amu)	Scan Rate (scans/sec)
1	2.5	35-550	10

**Transfer Line Temp.:** 290 °C  
**Analyzer Type:** Quadrupole  
**Source Temp.:** 325 °C  
**Electron Energy:** 70 eV  
**Tune Type:** PFTBA  
**Ionization Mode:** EI

**Instrument** Thermo Scientific TSQ 8000 Triple Quadrupole GC-MS

**Sample Preparation** 10 g of homogenized strawberries were extracted with 10 mL of acetonitrile and QuEChERS EN 15662 salts (cat.# 25850). After centrifugation, 1 mL of supernatant was added to a 2 mL dSPE vial containing magnesium sulfate and PSA (cat.# 26124) for cleanup. The cleaned extract was spiked at 10 ppm with a multi-pesticide standard containing captan in a 2 mL short-cap, screw-thread vial (cat.# 21143) and capped with a short-cap, screw-vial closure (cat.# 24495).

**Notes** Injections were performed as sandwich co-injections with 1 µL shikimic acid (1 mg/mL in acetonitrile with 1% water) as an analyte protectant (with AP injection) or with acetonitrile as the control (without AP injection).