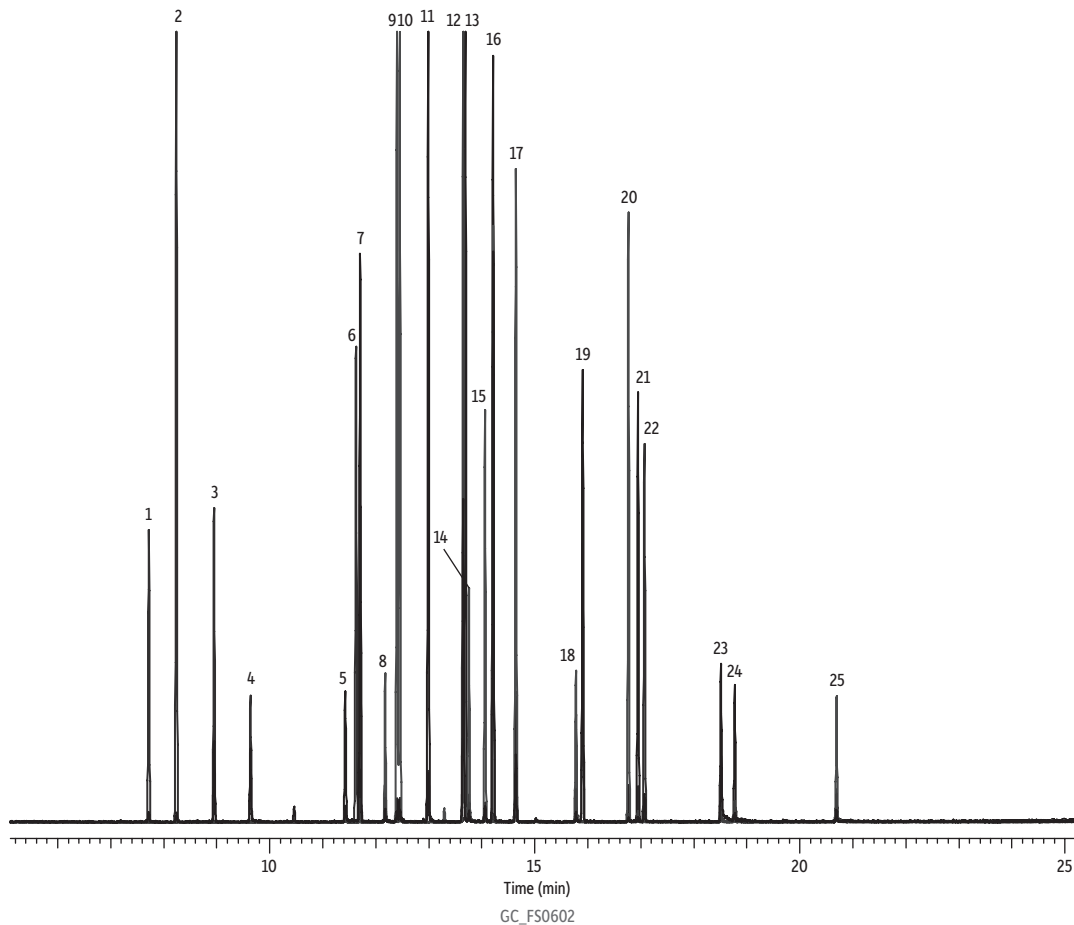


# GC Multiresidue Pesticide Standard #3-ONP on Rxi®-5ms by GC-MS

Peaks	t <sub>R</sub> (min)	Peaks	t <sub>R</sub> (min)
1. 2,6-Dichlorobenzonitrile (Dichlobenil)	7.72	13. Pentachlorobenzonitrile	13.69
2. Biphenyl	8.24	14. Profluralin	13.76
3. 3,4'-Dichloroaniline	8.95	15. Fluchloralin	14.06
4. THPI (Tetrahydrophthalimide)	9.64	16. Chlorothalonil	14.21
5. Tetrachloronitrobenzene (Tecnazene)	11.42	17. Pentachloroaniline	14.64
6. Diphenylamine	11.63	18. Prodiamine	15.78
7. 2,3,5,6-Tetrachloroaniline	11.70	19. Dichlofluanid	15.90
8. Ethalfluralin	12.18	20. Isopropalin	16.77
9. Trifluralin	12.40	21. Pendimethalin	16.95
10. Benfluralin	12.45	22. Tolyfluanid	17.07
11. Dicloran	12.99	23. Oxyfluorfen	18.51
12. Pentachloronitrobenzene (Quintozene)	13.65	24. Nitrofen	18.77
		25. Nitralin	20.69



GC\_FS0602

**Column** Rxi®-5ms, 30 m, 0.25 mm ID, 0.25 µm (cat.# 13423)  
**Sample** GC multiresidue pesticide standard #3-ONP (cat.# 32565)  
**Diluent:** Toluene  
**Conc.:** 100 µg/mL  
**Injection**  
**Inj. Vol.:** 1 µL split (split ratio 50:1)  
**Liner:** Premium 4.0 mm ID Precision® inlet liner w/wool (cat.# 23305.1)  
**Inj. Temp.:** 250 °C  
**Oven**  
**Oven Temp.:** 90 °C (hold 1 min) to 330 °C at 8.5 °C/min (hold 5 min)  
**Carrier Gas** He, constant flow  
**Flow Rate:** 1.4 mL/min  
**Detector** MS  
**Mode:** Scan

**Scan Program:**  

Group	Start Time (min)	Scan Range (amu)	Scan Rate (scans/sec)
1	5	55-550	7

**Transfer Line** Temp.: 290 °C  
**Analyzer Type:** Quadrupole  
**Source Temp.:** 325 °C  
**Electron Energy:** 70 eV  
**Solvent Delay**  
**Time:** 5 min  
**Ionization Mode:** EI  
**Instrument** Thermo Scientific TSQ 8000 Triple Quadrupole GC-MS  
**Notes** Reconstructed chromatogram from select ions.