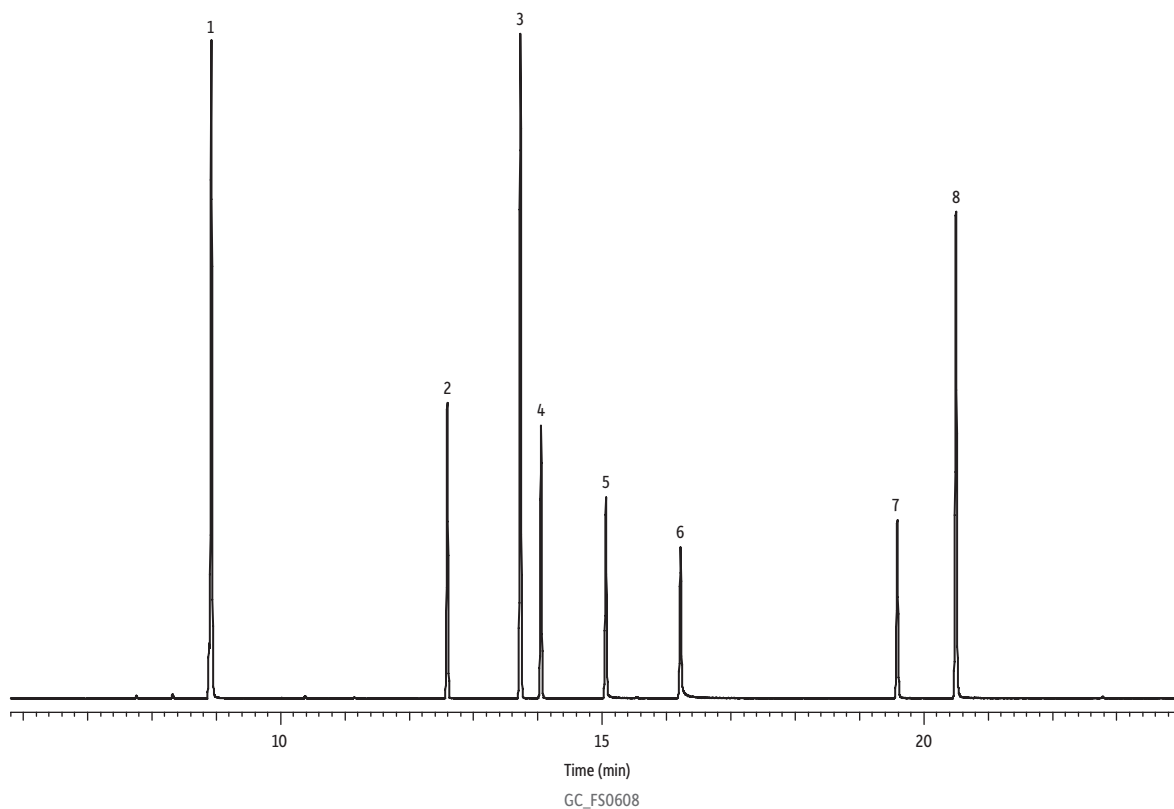


GC Multiresidue Pesticide Standard #9-OPP on Rxi®-5ms by GC-MS

Peaks	tr (min)
1. Mevinphos	8.92
2. Phorate	12.59
3. Fonofos	13.73
4. Disulfoton	14.05
5. Methyl parathion	15.06
6. Parathion (ethyl parathion)	16.22
7. Triazophos	19.59
8. Piperonyl butoxide	20.50



Column Rxi®-5ms, 30 m, 0.25 mm ID, 0.25 µm (cat.# 13423)
Sample GC multiresidue pesticide standard #9-OPP (cat.# 32571)
Diluent: Toluene
Conc.: 100 µg/mL
Injection
Inj. Vol.: 1 µL split (split ratio 50:1)
Liner: Premium 4.0 mm ID Precision® inlet liner w/wool (cat.# 23305.1)
Inj. Temp.: 250 °C
Oven
Oven Temp.: 90 °C (hold 1 min) to 330 °C at 8.5 °C/min (hold 5 min)
Carrier Gas He, constant flow
Flow Rate: 1.4 mL/min
Detector MS
Mode: Scan

Scan Program:

Group	Start Time (min)	Scan Range (amu)	Scan Rate (scans/sec)
1	5	55-550	7

Transfer Line
Temp.: 290 °C
Analyzer Type: Quadrupole
Source Temp.: 325 °C
Electron Energy: 70 eV
Solvent Delay
Time: 5 min
Ionization Mode: EI
Instrument Thermo Scientific TSQ 8000 Triple Quadrupole GC-MS
Notes Reconstructed chromatogram from select ions.