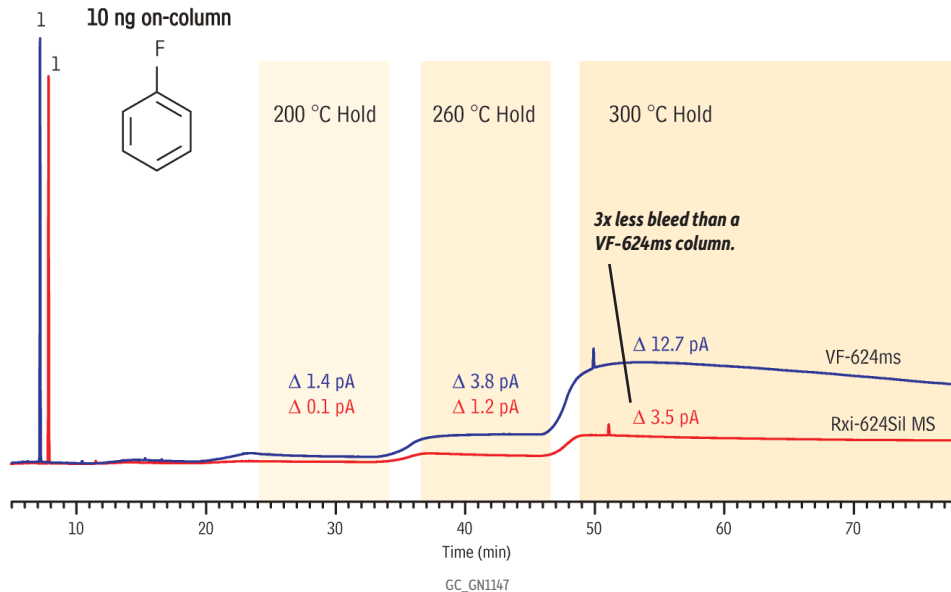


## Bleed Comparison of Rxi-624Sil MS and VF-624ms



### Peaks

1. Fluorobenzene

<b>Column</b>	Rxi-624Sil MS (see notes), 30 m, 0.25 mm ID, 1.4 $\mu$ m (cat.# 13868)
<b>Sample</b>	Fluorobenzene (cat.# 30030)
<b>Diluent:</b>	Methanol
<b>Conc.:</b>	200 $\mu$ g/mL
<b>Injection</b>	
<b>Inj. Vol.:</b>	1 $\mu$ L split (split ratio 20:1)
<b>Liner:</b>	4 mm Split liner with wool (cat.# 20781)
<b>Inj. Temp.:</b>	220 °C
<b>Oven</b>	
<b>Oven Temp.:</b>	40 °C (hold 5 min) to 60 °C at 20 °C/min (hold 5 min) to 120 °C at 20 °C/min (hold 5 min) to 200 °C at 20 °C/min (hold 10 min) to 260 °C at 20 °C/min (hold 10 min) to 300 °C at 20 °C/min (hold 20 min)
<b>Carrier Gas</b>	He, constant flow
<b>Linear Velocity:</b>	40 cm/sec
<b>Detector</b>	FID @ 250 °C
<b>Instrument</b>	Agilent/HP6890 GC
<b>Notes</b>	Columns are of equivalent dimensions and were tested after equivalent conditioning.