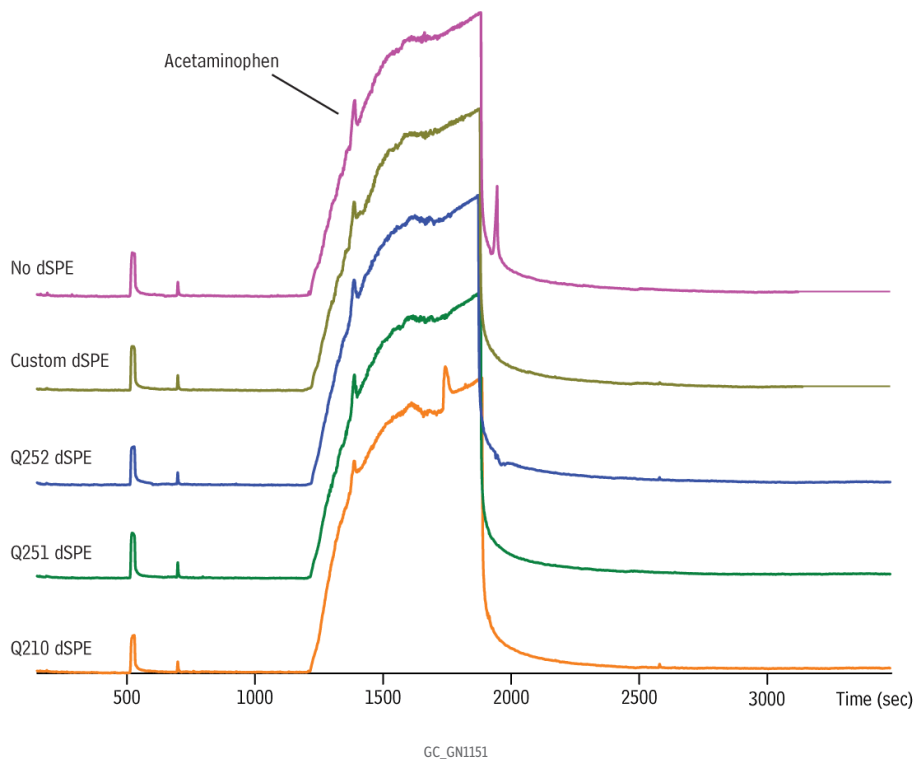


QuEChERS Extracts of Tylenol with Different dSPE Cleanups on Rxi-5Sil MS



Column	Rxi-5Sil MS, 30 m, 0.25 mm ID, 0.25 µm (cat.# 13623)
Standard/Sample	QuEChERS extracts of Tylenol spiked with TBA and anisoles
Diluent:	Acetonitrile
Injection	
Inj. Vol.:	1 µL splitless (hold 1 min)
Liner:	Gooseneck splitless (4 mm) w/wool (cat.# 22405)
Inj. Temp.:	250 °C
Purge Flow:	40 mL/min
Oven	
Oven Temp.:	90 °C (hold 1 min) to 310 °C at 4 °C/min (hold 2 min)
Carrier Gas	He, constant flow
Flow Rate:	1.2 mL/min
Linear Velocity:	40 cm/sec
Detector	TOFMS
Transfer Line Temp.:	290 °C
Analyzer Type:	TOF
Source Temp.:	225 °C
Electron Energy:	70 eV
Mass Defect:	-20 mu/100 u
Solvent Delay Time:	2 min
Tune Type:	PFTBA
Ionization Mode:	El
Acquisition Range:	45 to 550 amu
Spectral Acquisition Rate:	5 spectra/sec
Instrument	LECO Pegasus 4D GCxGC-TOFMS
Sample Preparation	Q210 = PSA Q251 = PSA and C18 Q252 = PSA, C18, and GCB Custom = PSA, C18, and less GCB
Notes	Liner cat.# 22405 was used to produce this chromatogram, but it has since been discontinued. We recommend cat.# 22406 [or cat.# 23303] as an alternative. For assistance choosing a replacement for this application, contact Restek Technical Service or your local Restek representative.