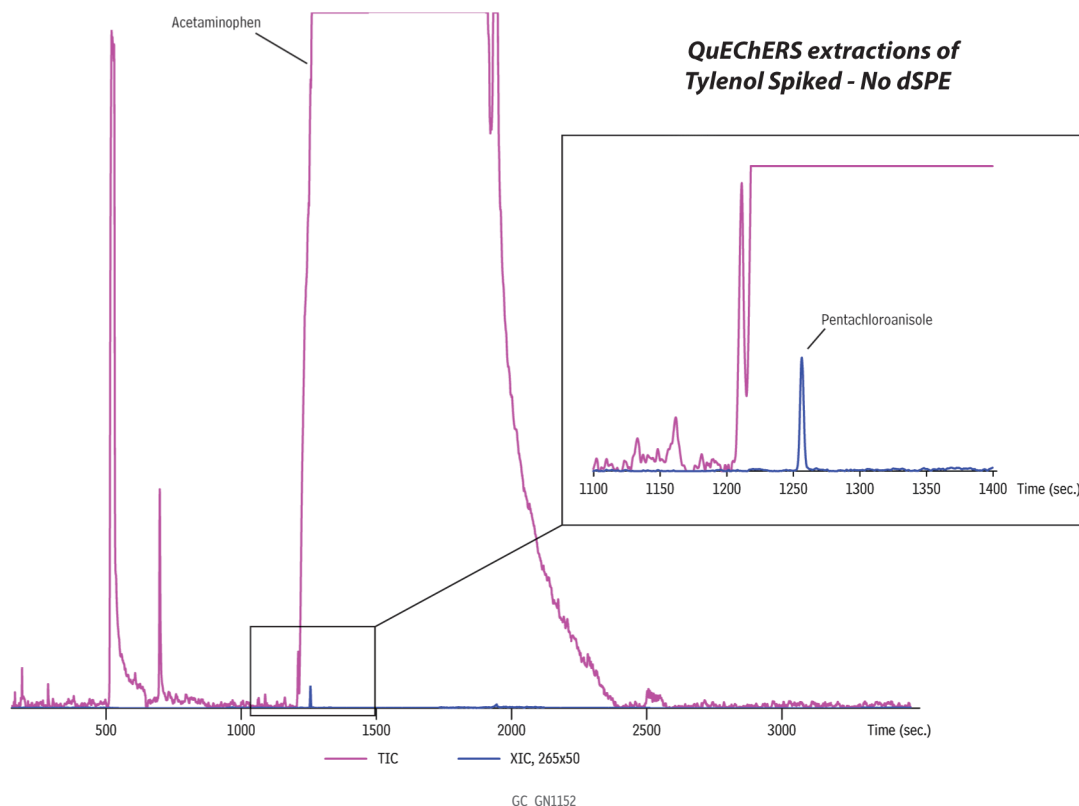


QuEChERS Extracts of Tylenol Spiked with Anisoles and TBA on Rxi-5Sil MS



Column	Rxi-5Sil MS, 30 m, 0.25 mm ID, 0.25 µm (cat.# 13623)
Standard/Sample	QuEChERS extracts of Tylenol spiked with TBA and anisoles
Diluent:	Acetonitrile
Injection	
Inj. Vol.:	1 µL splitless (hold 1 min)
Liner:	Gooseneck splitless (4 mm) w/wool
Inj. Temp.:	250 °C
Purge Flow:	40 mL/min
Oven	
Oven Temp.:	90 °C (hold 1 min) to 310 °C at 4 °C/min (hold 2 min)
Carrier Gas	He, constant flow
Flow Rate:	1.2 mL/min
Linear Velocity:	40 cm/sec
Detector	TOFMS
Transfer Line Temp.:	290 °C
Analyzer Type:	TOF
Source Temp.:	225 °C
Electron Energy:	70 eV
Mass Defect:	-20 mu/100 u
Solvent Delay Time:	2 min
Tune Type:	PFTBA
Ionization Mode:	El
Acquisition Range:	45 to 550 amu
Spectral	
Acquisition Rate:	5 spectra/sec
Instrument	LECO Pegasus 4D GCxGC-TOFMS
Notes	Liner cat.# 22405 was used to produce this chromatogram, but it has since been discontinued. We recommend cat.# 22406 [or cat.# 23303] as an alternative. For assistance choosing a replacement for this application, contact Restek Technical Service or your local Restek representative.

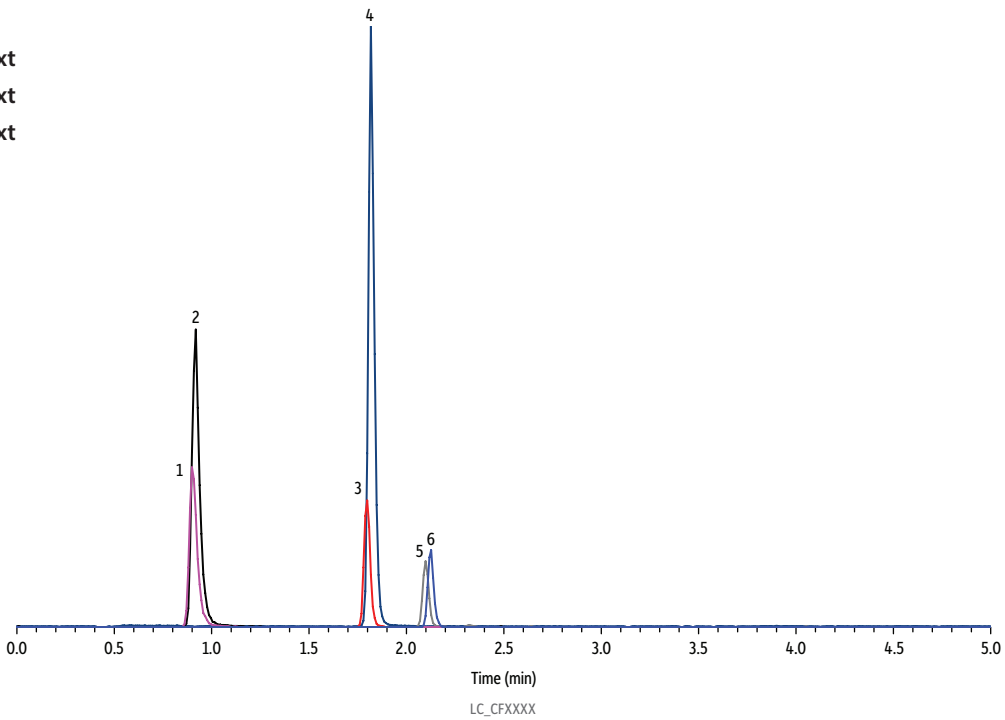
	Total ion chromatogram (pink) of QuEChERS extracts of Tylenol spiked with anisoles and TBA, and extracted ion chromatogram (blue, 265x50) of pentachloroanisole, which was located by an automated peak find routine underneath the large acetaminophen peak. No dSPE was performed on this sample.

Heading

Bullets are only to be used when bullet text is provided by the TWs.

Delete if not needed.

- Sample bullet text
- Sample bullet text
- Sample bullet text



Peaks	ts (min)	Conc. (µg/mL)	Precursor Ion	Product Ion
1. Compound	0.0	0.0	0.0	0.0

Column	X
Dimensions:	X
Particle Size:	X
Guard Column:	X
Temp.:	X
Sample	
Diluent:	X
Inj. Vol.:	X
Mobile Phase	
A:	X
B:	X

Time (min)	Flow (mL/min)	%A	%B
0.00	0.5	85	15

Detector	X
Ion Mode:	X
Mode:	X
Instrument	X
Sample Preparation	X
Notes	X