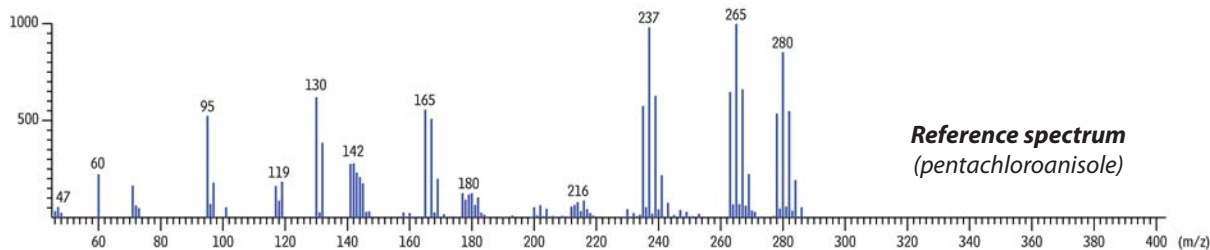
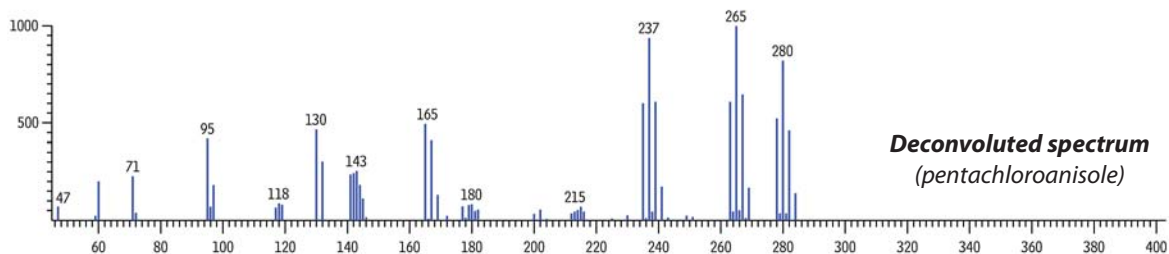
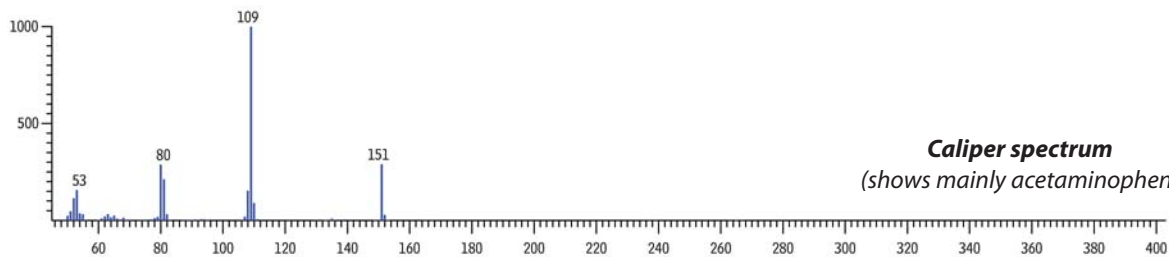


**Mass Spectra of Pentachloroanisole QuEChERS Extracts of Tylenol® Spiked with Anisoles and TBA on Rxi®-5Sil MS**



GC\_GN1153

**Column** Rxi®-5Sil MS, 30 m, 0.25 mm ID, 0.25 μm (cat.# 13623)  
**Sample** QuEChERS extracts of Tylenol® spiked with TBA and anisoles  
**Diluent:** Acetonitrile  
**Injection**  
 Inj. Vol.: 1 μL splitless (hold 1 min.)  
 Liner: Gooseneck Splitless (4mm) with Wool (cat.# 22405)  
 Inj. Temp.: 250 °C  
 Purge Flow: 40 mL/min.  
**Oven**  
 Oven Temp: 90 °C (hold 1 min.) to 310 °C at 4 °C/min. (hold 2 min.)  
**Carrier Gas** He, constant flow  
 Flow Rate: 1.2 mL/min.  
 Linear Velocity: 40 cm/sec.  
**Detector** TOFMS  
 Transfer  
 Line Temp.: 290 °C  
 Analyzer Type: TOF  
 Source Temp.: 225 °C  
 Electron Energy: 70 eV  
 Mass Defect: -20 mu/100 u  
**Solvent**  
 Delay Time: 2 min.  
 Tune Type: PFTBA  
 Ionization Mode: EI  
**Acquisition**  
 Range: 45 to 550 amu  
**Spectral**  
 Acquisition Rate: 5  
**Instrument** LECO Pegasus 4D GCxGC-TOFMS  
**Notes**

The caliper spectrum taken at the peak apex of pentachloroanisole is representative of the overwhelming acetaminophen peak, but TOF-MS allows spectral deconvolution to produce a sample spectrum that matches well with the reference spectrum. No dSPE was performed on this sample; see Applications Note GNAN1263 for complete sample fortification and extraction details.