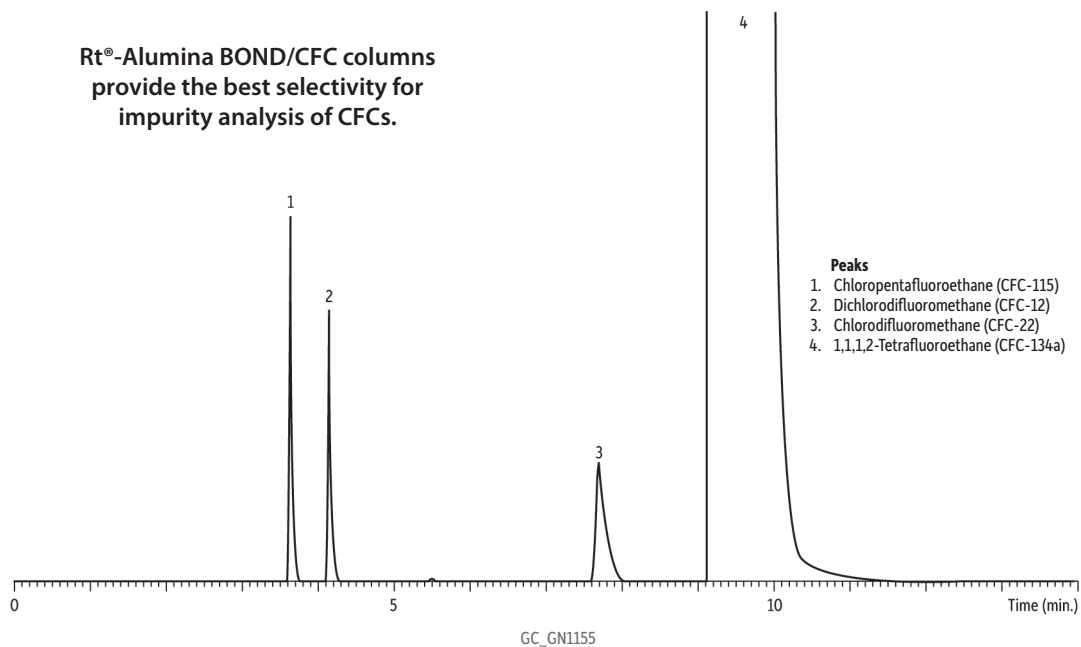


Impurity Analysis of 1,1,1,2-Tetrafluoroethane (CFC-134a) on Rt®-Alumina BOND/CFC

Rt®-Alumina BOND/CFC columns
provide the best selectivity for
impurity analysis of CFCs.



Column	Rt®-Alumina BOND/CFC, 30 m, 0.53 mm ID (cat.# 19763)
Sample	1,1,1,2-tetrafluoroethane (neat)
Conc.:	
Injection	
Inj. Vol.:	500 µL split
Oven	
Oven Temp:	80 °C (hold 6 min.) to 140 °C at 10 °C/min. (hold 2 min.)
Carrier Gas	He
Detector	FID
Notes	Gas sampling, purity analysis Note that tailing peaks are common in CFC analyses due to overloading normally employed for this type of work.