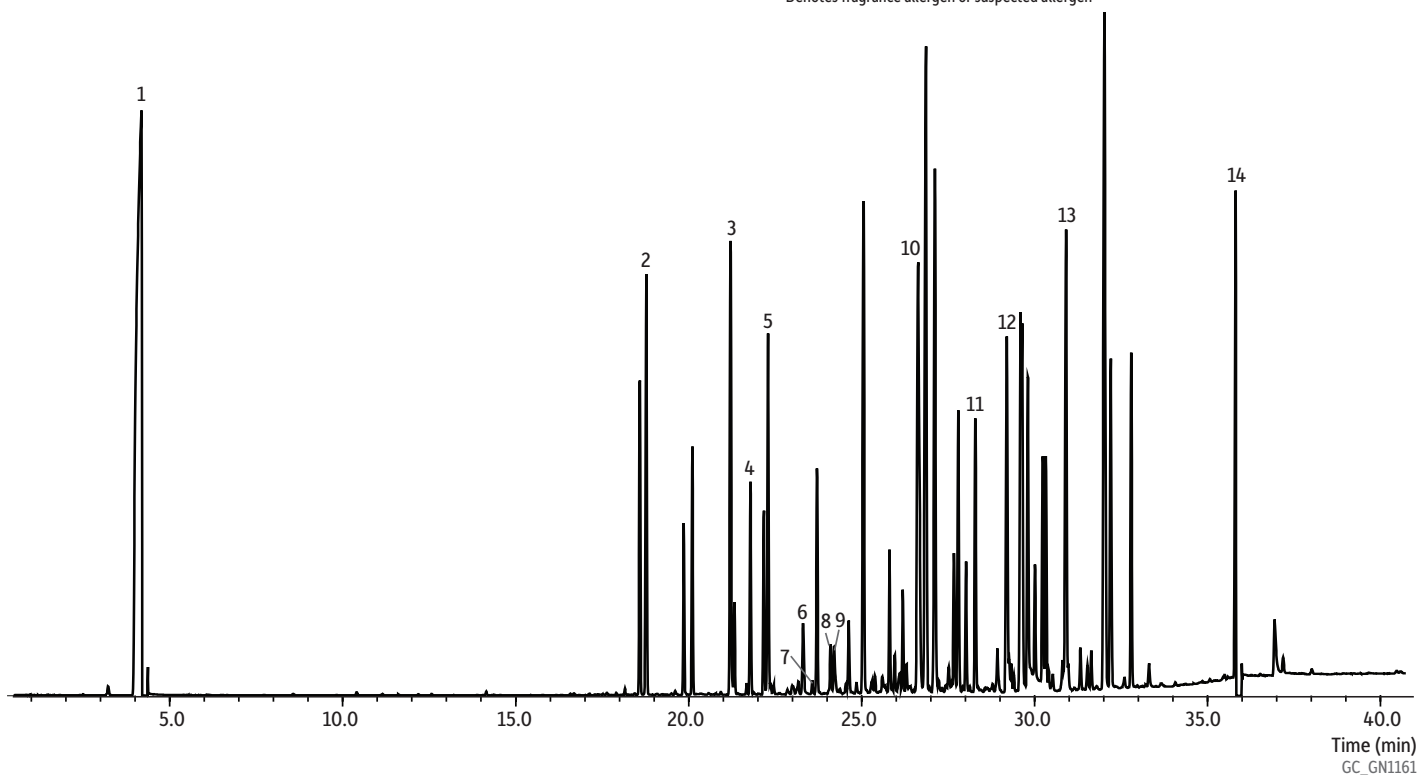


Fragrance Allergens and Common Compounds in Commercial Perfume on Stabilwax®-MS

Peaks	tr (min)
1. Ethanol	4.18
2. Linalool*	18.59
3. Terpineol	21.21
4. Benzyl acetate	21.78
5. Citronello*	22.29
6. Dipropylene glycol isomer 1	23.31
7. Geraniol*	23.57
8. Dipropylene glycol isomer 2	24.10
9. Dipropylene glycol isomer 3	24.20
10. Lilial*	26.63
11. Isoeugenol*	28.29
12. Piperonal	29.20
13. Diethyl phthalate	30.91
14. Benzyl salicylate*	35.81

* Denotes fragrance allergen or suspected allergen



Column Stabilwax®-MS, 30 m, 0.25 mm ID, 0.25 µm (cat.# 10673)
Sample Commercial perfume A
Conc.: Neat
Injection
 Inj. Vol.: 1 µL split (split ratio 200:1)
 Liner: Premium 3.5 mm ID single taper w/wool (cat.# 23322.5)
 Inj. Temp.: 250 °C
Oven
 Oven Temp: 35 °C (hold 5 min) to 250 °C at 7 °C/min (hold 5 min)
Carrier Gas He, constant linear velocity
 Linear Velocity: 36 cm/sec
Detector MS
 Mode: Scan
 Scan Program:

Group	Start Time (min)	Scan Range (amu)	Scan Rate (scans/sec)
1	0	40-550	2

Transfer Line
 Temp.: 260 °C
Analyzer Type: Quadrupole
Source Temp.: 250 °C
Electron Energy: 70 eV
Solvent Delay
 Time: 0.5 min
Ionization Mode: EI
Instrument Shimadzu 2010 GC & QP2010+ MS