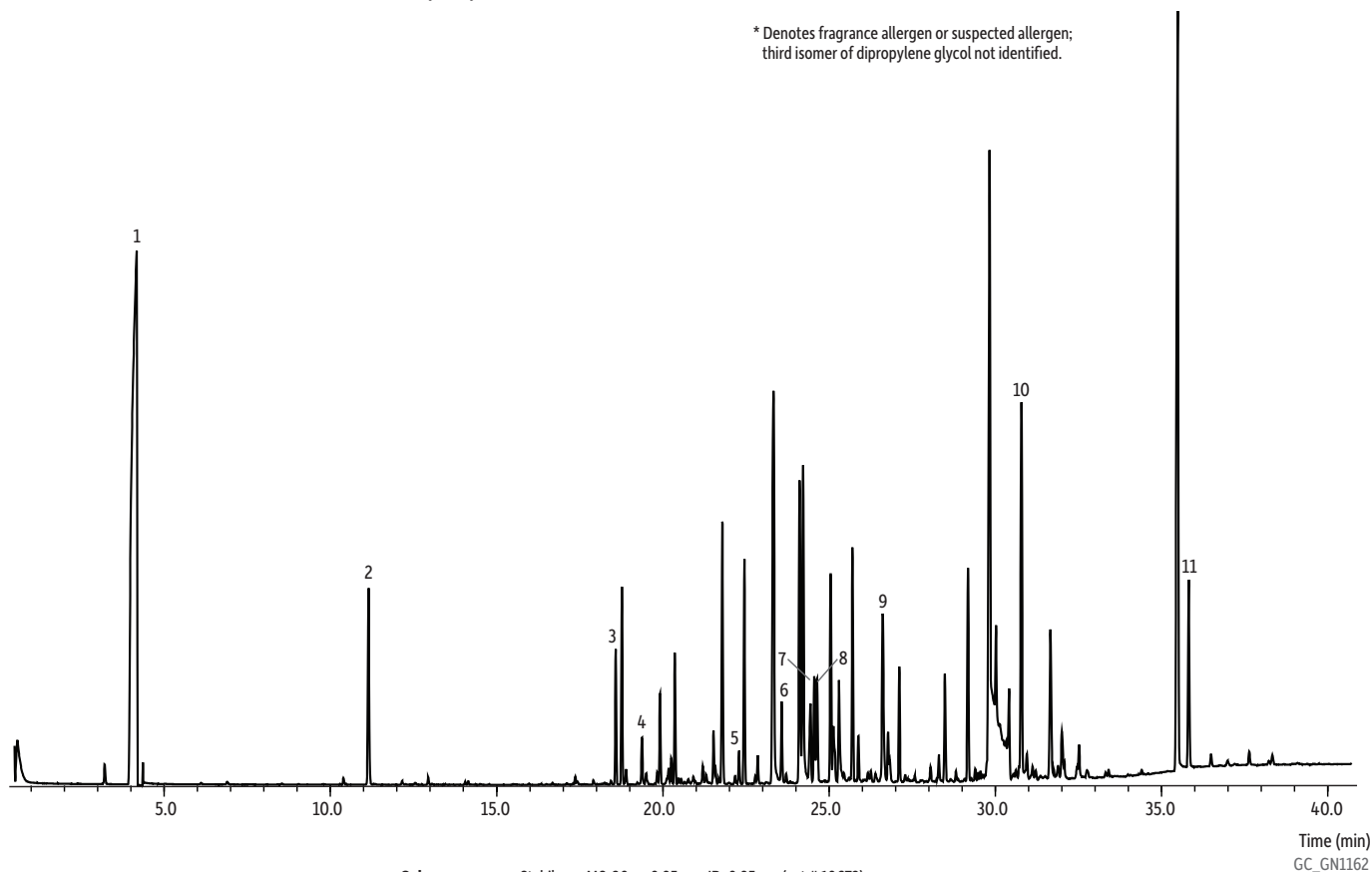


Fragrance Allergens and Common Compounds in Commercial Perfume on Stabilwax-MS

Peaks	t _r (min)
1. Ethanol	4.18
2. Limonene*	11.47
3. Linalool*	18.58
4. Guaiene	19.37
5. Citronellol*	22.29
6. Geraniol*	23.57
7. Dipropylene glycol isomer 1	24.11
8. Dipropylene glycol isomer 2	24.21
9. Lilial*	26.61
10. α-Hexyl-cinnamaldehyde*	30.78
11. Benzyl salicylate*	35.82

* Denotes fragrance allergen or suspected allergen; third isomer of dipropylene glycol not identified.



Column Stabilwax-MS, 30 m, 0.25 mm ID, 0.25 μm (cat.# 10673)
Sample Commercial perfume B
Diluent: Neat
Injection
 Inj. Vol.: 1 μL split (split ratio 200:1)
 Liner: Premium 3.5 mm single taper w/wool (cat.# 23322)
 Inj. Temp.: 250 °C
Oven
 Oven Temp: 35 °C (hold 5 min) to 250 °C at 7 °C/min (hold 5 min)
Carrier Gas He, constant linear velocity
 Linear Velocity: 36 cm/sec
Detector MS
 Mode: Scan
 Scan Program:

Group	Start Time (min)	Scan Range (amu)	Scan Rate (scans/sec)
1	0	40-550	2

Transfer Line
 Temp.: 260 °C
 Analyzer Type: Quadrupole
 Source Temp.: 250 °C
 Electron Energy: 70 eV
 Solvent Delay
 Time: 0.5 min
 Ionization Mode: EI
Instrument Shimadzu 2010 GC & QP2010+ MS