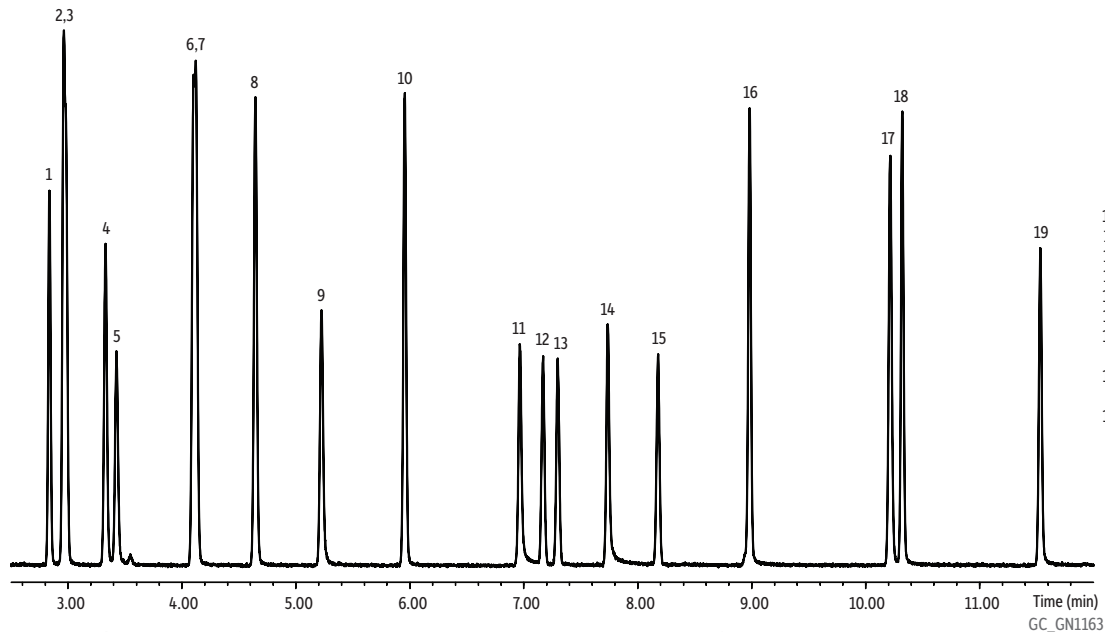


Custom Solvents Mix on Stabilwax-MS



Peaks

1. Ethyl acetate
2. *n*-Propyl acetate
3. MEK
4. Isopropyl alcohol
5. Ethanol
6. Isopropyl acetate
7. 2-Pentanone
8. MIBK
9. 1-Propanol
10. Butyl acetate
11. 1-Methoxy-2-propanol
12. *p*-Xylene
13. *m*-Xylene
14. Propylene glycol ethyl ether
15. *o*-Xylene
16. 1-Methoxy-2-propyl acetate
17. Cyclohexanone
18. Ethylene glycol monoethyl ether acetate
19. Diacetone alcohol

Column Stabilwax-MS, 30 m, 0.25 mm ID, 0.25 μ m (cat.# 10673)
Sample Custom solvent standard
Diluent: Cyclohexane
Conc.: 400 ppm
Injection
Inj. Vol.: 0.5 μ L split (split ratio 200:1)
Liner: Premium 4 mm Precision[®] liner w/wool (cat.# 23305)
Inj. Temp.: 200 °C
Oven
Oven Temp: 40 °C (hold 3 min) to 130 °C at 8 °C/min
Carrier Gas He, constant flow
Flow Rate: 1.0 mL/min
Detector MS

Mode: Scan
Scan Program: 30-150 amu
Transfer Line
Temp.: 200 °C
Analyzer Type: Quadrupole
Source Temp.: 200 °C
Quad Temp.: 150 °C
Electron Energy: 70 eV
Solvent Delay
Time: 2.5 min
Tune Type: PFTBA
Ionization Mode: EI
Instrument Agilent 7890A GC & 5975C MSD