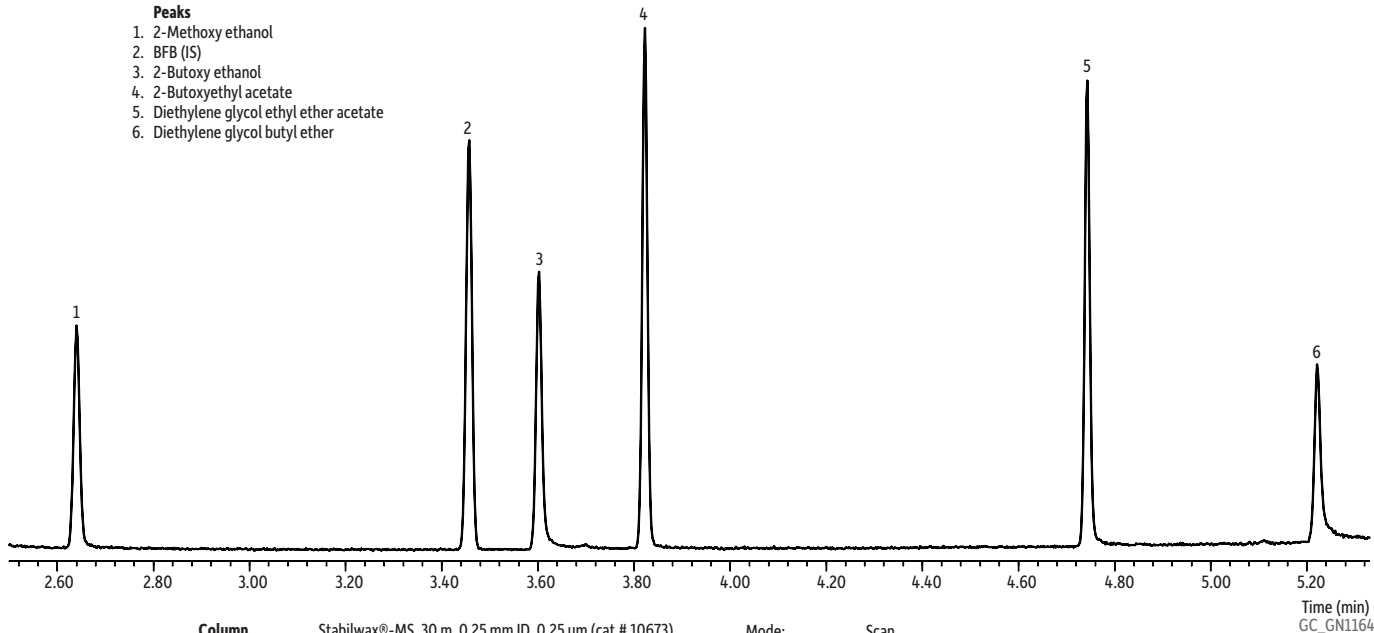


# Custom Cleaning Solvents Standard on Stabilwax®-MS

## Peaks

1. 2-Methoxy ethanol
2. BFB (IS)
3. 2-Butoxy ethanol
4. 2-Butoxyethyl acetate
5. Diethylene glycol ethyl ether acetate
6. Diethylene glycol butyl ether



**Column** Stabilwax®-MS, 30 m, 0.25 mm ID, 0.25 µm (cat.# 10673)  
**Sample** Custom standard  
**Diluent:** Methanol  
**Conc.:** 200 ppm  
**Injection**  
**Inj. Vol.:** 1.0 µL split (split ratio 300:1)  
**Liner:** Premium 4 mm Precision® liner w/wool (cat.# 23305.5)  
**Inj. Temp.:** 200 °C  
**Oven**  
**Oven Temp:** 60 °C to 220 °C at 30 °C/min  
**Carrier Gas** He, constant flow  
**Flow Rate:** 1.0 mL/min  
**Detector** MS

**Mode:** Scan  
**Scan Program:** 30-200 amu  
**Transfer Line**  
**Temp.:** 200 °C  
**Analyzer Type:** Quadrupole  
**Source Temp.:** 200 °C  
**Quad Temp.:** 150 °C  
**Electron Energy:** 70 eV  
**Solvent Delay**  
**Time:** 2.3 min  
**Tune Type:** PFTBA  
**Instrument** Agilent 7890A GC & 5975C MSD

Time (min)  
GC\_GN1164