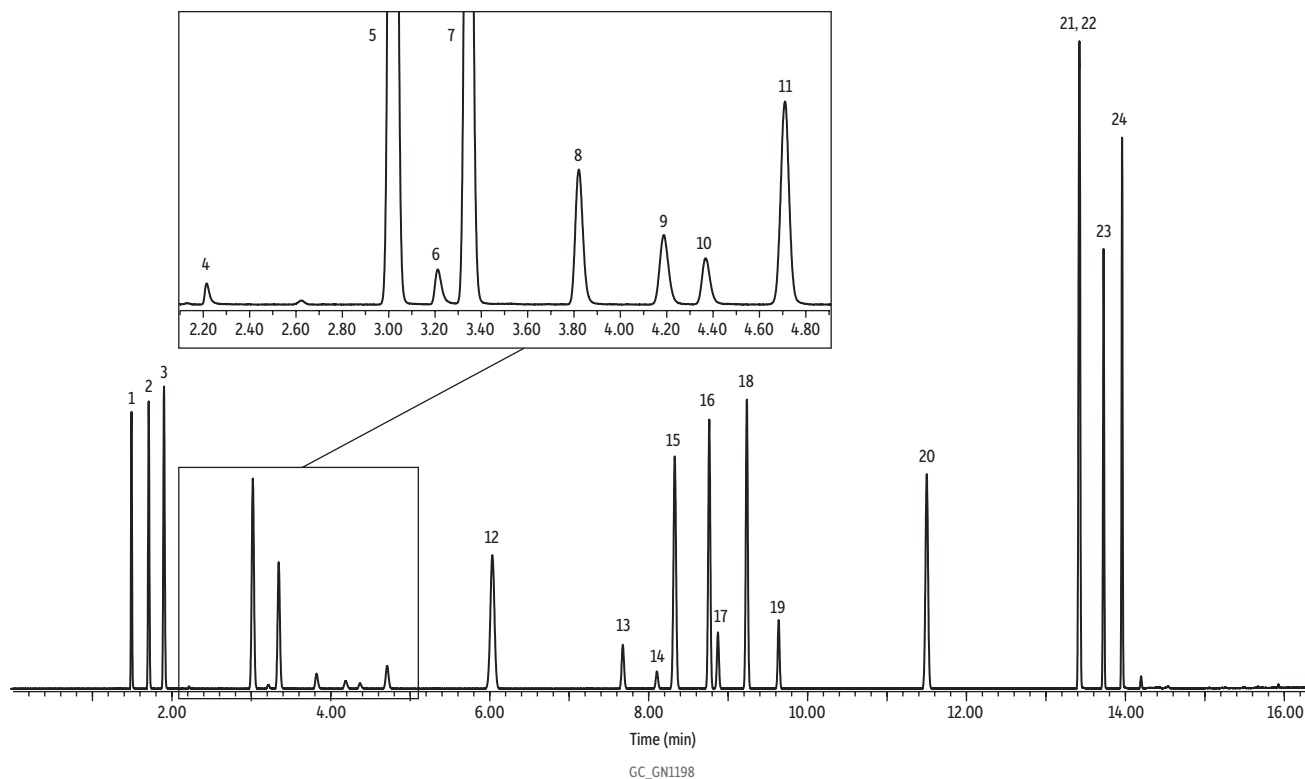


# Residual Solvents and Gases on Rxi-624Sil MS via HS-Syringe-GC-FID



Peaks	tr (min)	Conc. (µg/mL)	Column Sample
1. <i>n</i> -Propane	1.492	10	Rxi-624Sil MS, 30 m, 0.25 mm ID, 1.40 µm (cat.# 13868) Residual solvents #1 (cat.# 34105) <i>n</i> -Propane, isobutane, <i>n</i> -butane (Emerald Scientific) Diluent: N,N-Dimethylacetamide Conc.: 10 µg/mL <b>Injection</b> Inj. Vol.: 250 µL headspace-syringe split (split ratio 10:1) Liner: Topaz 1.8 mm ID straight/SPME inlet liner (cat.# 23280) Inj. Temp.: 280 °C <b>Headspace-Syringe</b> Split Vent Flow Rate: 20 mL/min Instrument: PAL RTC Syringe Temp.: 150 °C Sample Temp.: 80 °C Sample Equil. Time: 45 min Inj. Speed: 1700 µL/sec <b>Oven</b> Oven Temp.: 30 °C (hold 6 min) to 85 °C at 15 °C/min (hold 2 min) to 250 °C at 35 °C/min <b>Carrier Gas</b> Flow Rate: 2 mL/min Linear Velocity: 40.63 cm/sec <b>Detector</b> Make-up Gas Flow Rate: 40 mL/min Make-up Gas Type: N <sub>2</sub> Hydrogen flow: 45 mL/min Air flow: 450 mL/min Data Rate: 20 Hz <b>Instrument</b> Agilent 7890B GC
2. Isobutane	1.708	10	
3. <i>n</i> -Butane	1.901	10	
4. Methanol	2.215	10	
5. <i>n</i> -Pentane	3.018	10	
6. Ethanol	3.212	10	
7. Diethyl ether	3.344	10	
8. Acetone	3.820	10	
9. 2-Propanol	4.188	10	
10. Acetonitrile	4.367	10	
11. Methylene chloride	4.710	10	
12. <i>n</i> -Hexane	6.033	10	
13. Ethyl acetate	7.675	10	
14. Chloroform	8.104	10	
15. Cyclohexane	8.328	10	
16. Benzene	8.763	10	
17. 1,2-Dichloroethane	8.872	10	
18. <i>n</i> -Heptane	9.236	10	
19. Trichloroethene	9.637	10	
20. Toluene	11.500	10	
21. <i>m</i> -Xylene	13.421	10	
22. <i>p</i> -Xylene	13.421	10	
23. <i>o</i> -Xylene	13.725	10	
24. N,N-Dimethylacetamide (solvent)	13.958	10	