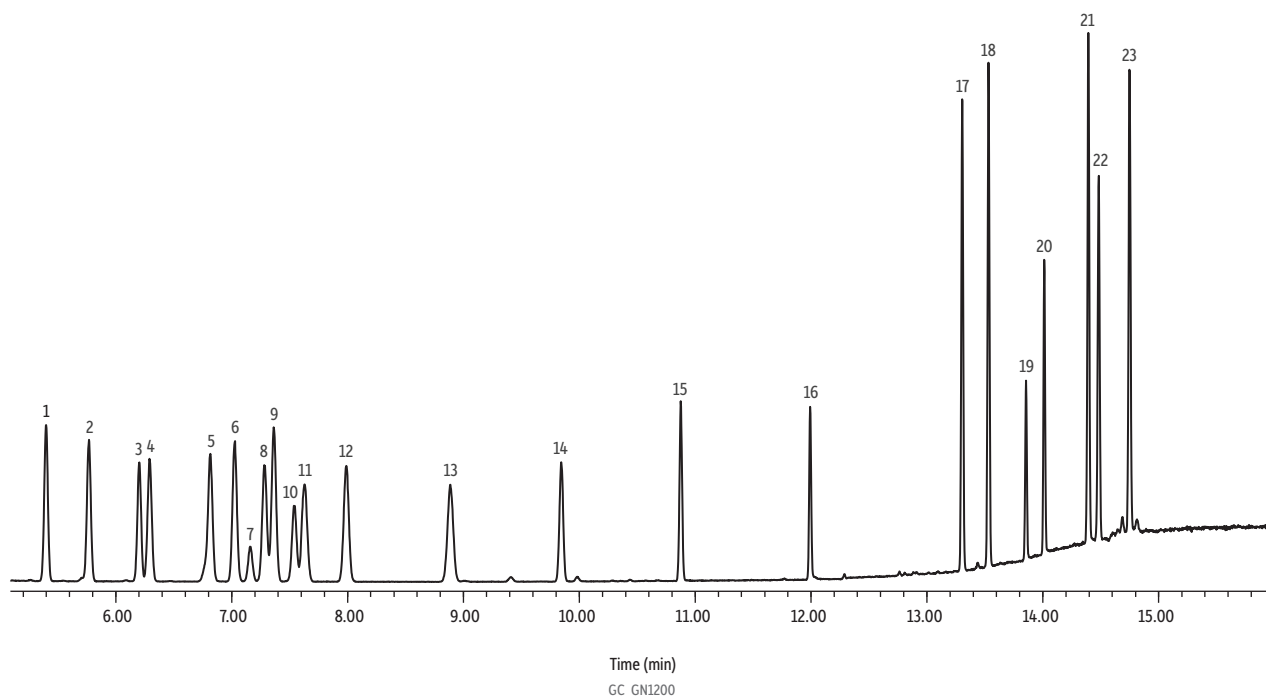


Cannabis Terpenes Standard #1 & #2 on Rxi-624Sil MS



Peaks	tr (min)	Peaks	tr (min)
1. alpha-Pinene	5.399	12. Gamma terpinene	7.990
2. Camphene	5.768	13. Terpinolene	8.887
3. beta-Myrcene	6.203	14. Linalool	9.845
4. (-)-beta-Pinene	6.290	15. (-)-Isopulegol	10.874
5. delta-3-Carene	6.816	16. Geraniol	11.991
6. alpha-Terpinene	7.026	17. beta-Caryophyllene	13.303
7. Ocimene 1	7.158	18. alpha-Humulene	13.531
8. D-Limonene	7.281	19. Nerolidol 1	13.855
9. p-Cymene	7.362	20. Nerolidol 2	14.012
10. Ocimene 2	7.539	21. (-)-Guaiol	14.393
11. Eucalyptol	7.629	22. Caryophyllene oxide	14.483
		23. (-)-alpha-Bisabolol	14.747

Column Rxi-624Sil MS, 30 m, 0.25 mm ID, 1.40 µm (cat.# 13868)
Sample Cannabis terpenes standard #1 (cat.# 34095)
 Cannabis terpenes standard #2 (cat.# 34096)
Diluent: Isopropanol
Conc.: 25 µg/mL (5 µg/mL on-column after 5:1 split)
Injection
Inj. Vol.: 1 µL split (split ratio 5:1)
Liner: Topaz 4.0 mm ID Precision inlet liner w/wool (cat.# 23305)
Inj. Temp.: 250 °C
Split Vent Flow Rate: 6 mL/min
Oven
Oven Temp.: 55 °C to 130 °C at 25 °C/min (hold 6 min) to 280 °C at 30 °C/min (hold 2 min)
Carrier Gas He, constant flow
Flow Rate: 1.2 mL/min
Detector MS
Mode: Scan

Scan Program:	Group	Start Time (min)	Scan Range (amu)	Scan Rate (scans/sec)
	1	5	35-280	5.6

Transfer Line Temp.: 310 °C
Analyzer Type: Quadrupole
Source Type: Inert
Drawout Plate: 6 mm ID
Source Temp.: 330 °C
Quad Temp.: 180 °C
Solvent Delay Time: 5 min
Tune Type: PFTBA
Ionization Mode: EI
Instrument Agilent 7890A GC & 5975C MSD