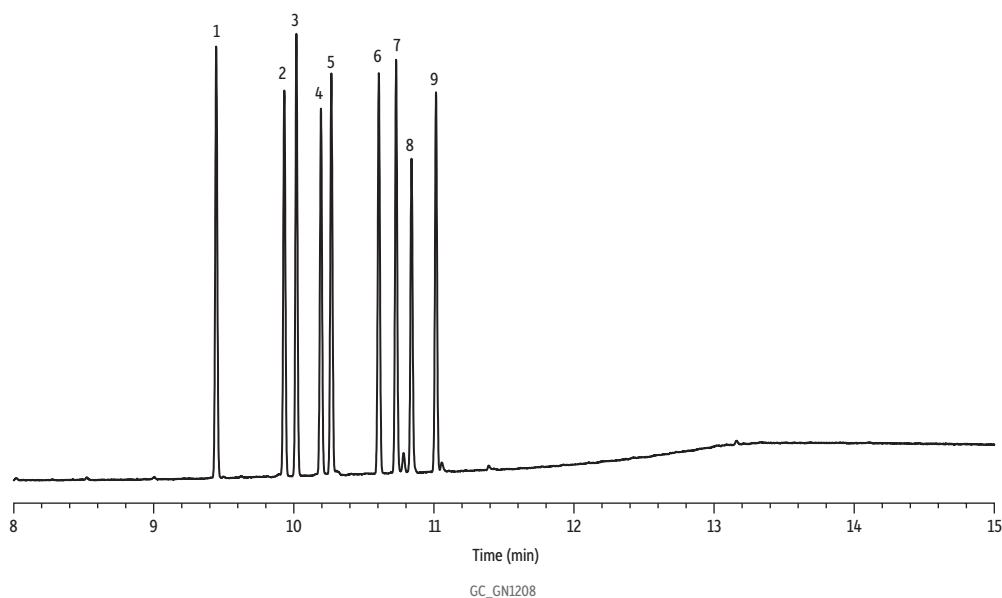


Cannabinoids Neutrals 9 Standard on Rxi-35Sil MS

- Conditions for separation of 9 neutral cannabinoids via GC.



Peaks	tr (min)	Conc. (µg/mL)
1. Cannabidiol (CBD)	9.446	10
2. Tetrahydrocannabinol (THC)	9.932	10
3. Cannabicyclol (CBL)	10.019	10
4. Cannabichromene (CBC)	10.194	10
5. Cannabidiol (CBD)	10.268	10
6. Delta-8-Tetrahydrocannabinol (Δ8-THC)	10.607	10
7. Delta-9-Tetrahydrocannabinol (Δ9-THC)	10.730	10
8. Cannabigerol (CBG)	10.840	10
9. Cannabinol (CBN)	11.015	10

Column	Rxi-35Sil MS, 15 m, 0.25 mm ID, 0.25 µm (cat.# 13820)
Standard/Sample	Cannabinoids neutrals 9 standard (cat.# 34132)
Diluent:	Methanol
Conc.:	10 µg/mL
Injection	
Inj. Vol.:	1 µL split (split ratio 10:1)
Liner:	Topaz 4.0 mm ID Precision inlet liner w/ wool (cat.# 23305)
Inj. Temp.:	260 °C
Split Vent Flow Rate:	3 mL/min
Oven	
Oven Temp.:	80 °C (hold 1 min) to 320 °C at 20 °C/min (hold 3 min)
Carrier Gas	He, constant flow
Flow Rate:	2.0 mL/min
Detector	FID @ 330 °C
Make-up Gas Flow Rate:	15 mL/min
Make-up Gas Type:	N ₂
Hydrogen flow:	30 mL/min
Air flow:	400 mL/min
Data Rate:	20 Hz
Instrument	Agilent 7890B GC