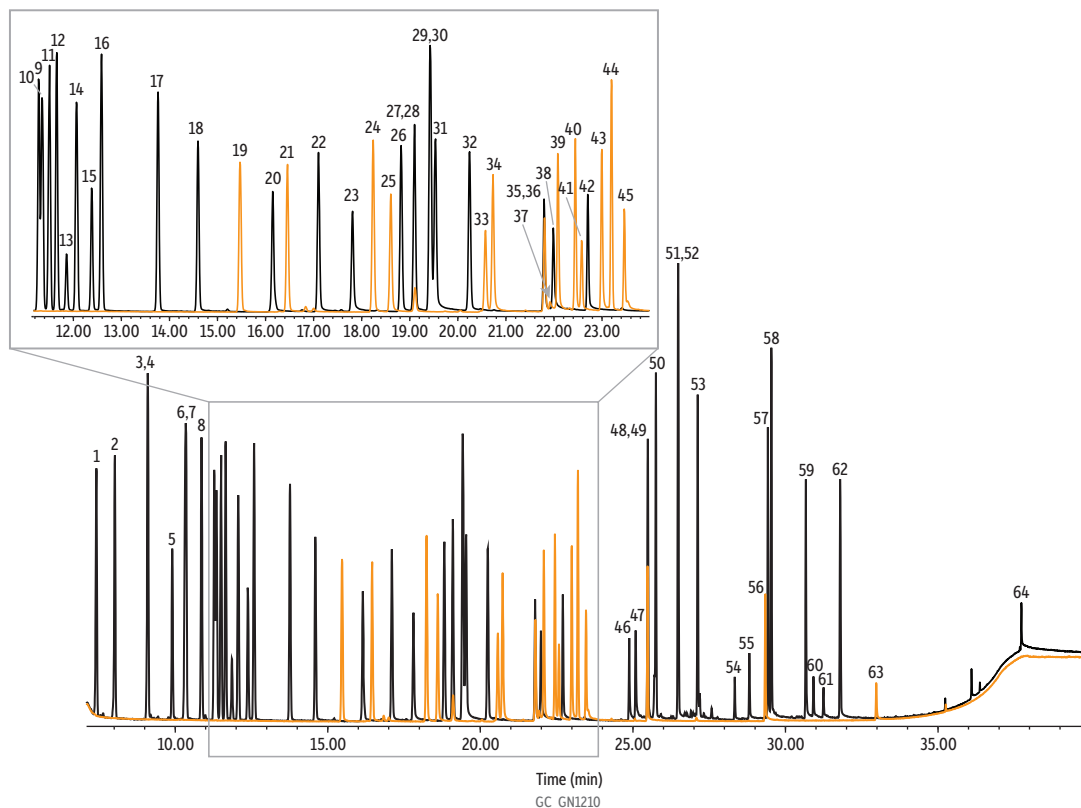


Terpenes MegaMix #1 & #2 on Rxi-1301Sil MS

- Increased number of terpenes.
- Improved separation of terpenes.



Column Rxi-1301Sil MS, 30 m, 0.25 mm ID, 0.25 µm (cat.# 16094)
Sample Terpenes MegaMix #1 (cat.# 34142)
 Terpenes MegaMix #2 (cat.# 34143)
Diluent: Isopropanol
Conc.: 10 µg/mL
Injection
Inj. Vol.: 1 µL split (split ratio 25:1)
Liner: Topaz 4.0 mm ID Precision inlet liner w/ wool (cat.# 23305)
Inj. Temp.: 280 °C
Split Vent
Flow Rate: 45 mL/min
Oven
Oven Temp.: 40 °C (hold 0.5 min) to 100 °C at 3 °C/min to 200 °C at 8 °C/min to 300 °C at 25 °C/min (hold 3 min)
Carrier Gas He, constant flow
Flow Rate: 1.8 mL/min
Detector 5977B
Scan Program:

Transfer Line
Temp.: 300 °C
Analyzer Type: Quadrupole
Source Type: HES
Source Temp.: 325 °C
Quad Temp.: 200 °C
Electron Energy: 70 eV
Solvent Delay
Time: 6.5 min
Tune Type: BFB
Ionization Mode: EI
Instrument Agilent 7890B GC & 5977B MSD

| Peaks | tr (min) | Peaks | tr (min) |
|-----------------------------------|----------|---|----------|
| 1. alpha-Pinene | 7.39 | 33. Safranal* | 20.58 |
| 2. Camphene | 8.00 | 34. Octyl acetate* | 20.71 |
| 3. (-)-beta-Pinene | 9.07 | 35. Nerol | 21.79 |
| 4. Sabinene | 9.07 | 36. (-)-Verbenone* | 21.81 |
| 5. Beta-myrcene | 9.89 | 37. d-Valerolactam* | 21.92 |
| 6. 3-Carene | 10.30 | 38. Citronellol | 21.99 |
| 7. R-(-)-alpha-Phellandrene | 10.30 | 39. (R)-(+)-Pulegone* | 22.07 |
| 8. alpha-Terpinene | 10.84 | 40. (S)-(+)-Carvone* | 22.43 |
| 9. D-Limonene | 11.26 | 41. cis-Citral* | 22.58 |
| 10. m-Isopropyltoluene | 11.32 | 42. Geraniol | 22.70 |
| 11. p-Cymene | 11.51 | 43. Piperitone* | 22.97 |
| 12. Eucalyptol | 11.64 | 44. Isobornyl acetate* | 23.18 |
| 13. cis-beta-Ocimene | 11.86 | 45. trans-Citral* | 23.47 |
| 14. o-Isopropyltoluene | 12.03 | 46. Thymol | 24.87 |
| 15. trans-beta-Ocimene | 12.37 | 47. Carvacrol | 25.08 |
| 16. gamma-Terpinene | 12.56 | 48. (-)-alpha-Cedrene | 25.47 |
| 17. Terpinolene | 13.74 | 49. Geranyl acetate* | 25.47 |
| 18. Sabinene hydrate | 14.57 | 50. Beta-caryophyllene | 25.75 |
| 19. (1R)-(-)-Fenchone* | 15.44 | 51. alpha-Humulene | 26.46 |
| 20. Linalool | 16.14 | 52. trans-beta-Farnesene | 26.46 |
| 21. (-)-alpha-Thujone* | 16.45 | 53. Valencene | 27.12 |
| 22. (1R)-endo-(+)-Fenchyl alcohol | 17.09 | 54. cis-Nerolidol | 28.34 |
| 23. (-)-Isopulegol | 17.81 | 55. trans-Nerolidol | 28.81 |
| 24. Camphor* | 18.22 | 56. (-)-Caryophyllene oxide* | 29.34 |
| 25. l-Menthone* | 18.61 | 57. (-)-Guaiol | 29.41 |
| 26. Isoborneol | 18.81 | 58. Cedrol | 29.53 |
| 27. Terpinen-4-ol | 19.08 | 59. (-)-alpha-Bisabolol | 30.66 |
| 28. D-isomenthone* | 19.11 | 60. Farnesol 1 | 30.92 |
| 29. (+)-Borneol | 19.39 | 61. Farnesol 2 | 31.25 |
| 30. L-(-)-Borneol | 19.39 | 62. Phytane (2,6,10,14-Tetramethylhexadecane) | 31.78 |
| 31. Menthol | 19.52 | 63. (+)-Nootkatone* | 32.97 |
| 32. alpha-Terpineol | 20.23 | 64. Squalene | 37.73 |

All compounds at 10 µg/mL. Compounds with an * are from Terpenes MegaMix #2 (cat.# 34143).