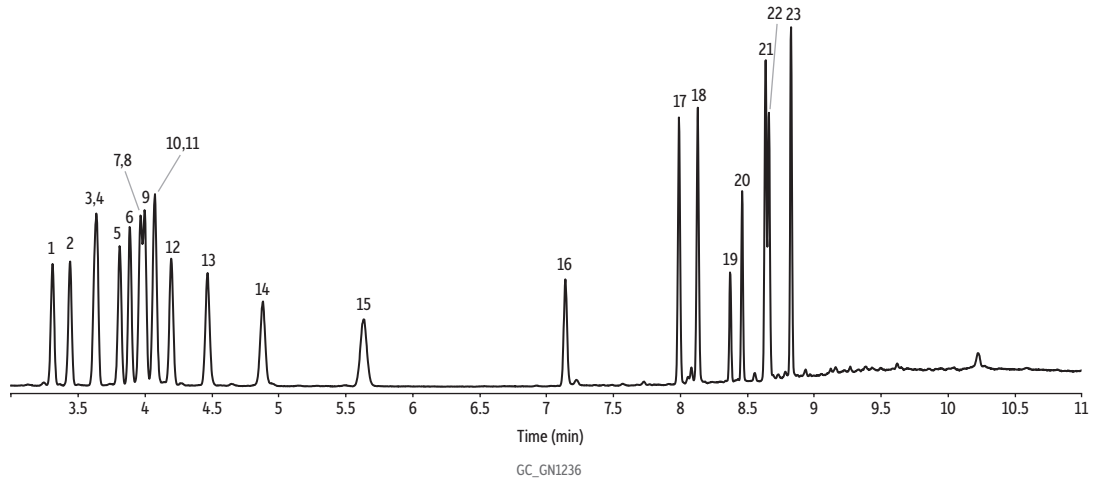


Cannabis Terpenes Standard #1 and #2 on LPGC Rxi-624Sil MS



Peaks	tr (min)	Conc. (µg/mL)	Peaks	tr (min)	Conc. (µg/mL)
1. α-Pinene	3.309	5	12. γ-Terpinene	4.197	5
2. Camphene	3.438	5	13. Terpinolene	4.468	5
3. β-Myrcene	3.627	5	14. Linalool	4.882	5
4. β-Pinene	3.639	5	15. Isopulegol	5.632	5
5. δ-3-Carene	3.810	5	16. Geraniol	7.139	5
6. α-Terpinene	3.885	5	17. β-Caryophyllene	7.989	5
7. α-OCimene	3.969	5	18. α-Humulene	8.127	5
8. D-Limonene	3.969	5	19. Nerolidol 1	8.373	5
9. p-Cymene	3.996	5	20. Nerolidol 2	8.460	5
10. β-OCimene	4.074	5	21. Guaiol	8.634	5
11. Eucalyptol	4.074	5	22. Caryophyllene oxide	8.658	5
			23. α-Bisabolol	8.826	5

α-OCimene and β-OCimene have coeluted with D-Limonene and Eucalyptol, respectively.

Column LPGC Rxi-624Sil MS (cat.# 11804), includes Rxi-624Sil MS, 10 m, 0.32 mm ID, 1.8 µm w/5 m, 0.15 mm ID Rxi restrictor connected via SilTite connector

Standard/Sample Cannabis terpenes standard #1 (cat.# 34.095)
Cannabis terpenes standard #2 (cat.# 34.096)

Diluent: Isopropanol

Conc.: 25 µg/mL (5 µg/mL on column)

Injection

Inj. Vol.: 1 µL split (split ratio 5:1)

Liner: Topaz, splitless, single taper inlet liner, 4.0 mm x 6.5 x 78.5 (cat.# 23303)

Inj. Temp.: 280 °C

Oven

Oven Temp.: 55 °C (hold 1 min) to 130 °C at 30 °C/min (hold 3 min) to 280 °C at 60 °C/min (hold 2 min)

Carrier Gas He, constant flow

Flow Rate: 0.9 mL/min

Detector Agilent 5975C

Scan Program:

Group	Start Time (min)	Scan Range (amu)	Scan Rate (scans/sec)
1	1.50	35-280	

Transfer Line Temp.: 310 °C

Source Temp.: 330 °C

Quad Temp.: 180 °C

Solvent Delay Time: 1.50 min

Tune Type: PFTBA

Ionization Mode: EI

Instrument Agilent 7890A GC & 5975C MSD

Sample Preparation The sample was in a 2 mL short-cap, screw-thread vial (cat.# 21143) and capped with a short-cap, screw-vial closure (cat.# 24495).