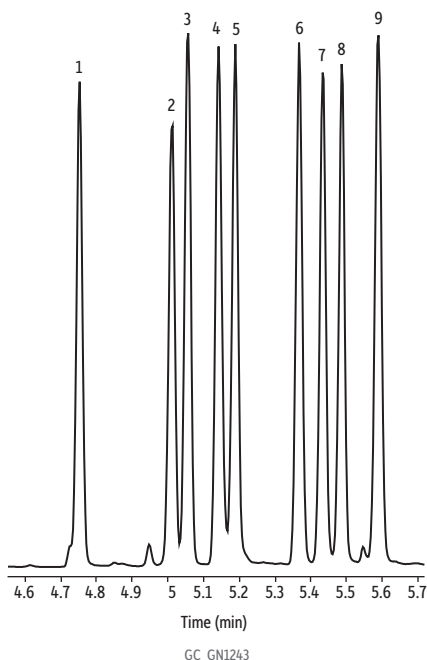


Cannabinoid Neutrals 9 Standard on LPGC Rxi-35Sil MS



Peaks	tr (min)	Conc. (µg/mL)
1. Cannabidivarin	4.753	20
2. Tetrahydrocannabivarin	5.013	20
3. Cannabicyclol	5.057	20
4. Cannabichromene	5.142	20
5. Cannabidiol	5.189	20
6. d8-Tetrahydrocannabinol	5.367	20
7. d9-Tetrahydrocannabinol	5.433	20
8. Cannabigerol	5.487	20
9. Cannabinol	5.590	20

Column LPGC Rxi-35Sil MS, includes Rxi-35mSil MS 10 m 0.32 mm 0.25 µm w/ 5 0.15 mm ID Rxi restrictor connected via SilTite connector

Standard/Sample Cannabinoids Neutrals 9 Standard (cat.# 34132)

Diluent: Methanol

Conc.: 100 µg/mL (20 µg/mL on column)

Injection

Inj. Vol.: 1 µL split (split ratio 5:1)

Liner: Topaz, splitless, single taper inlet liner, 4.0 mm x 6.5 x 78.5 (cat.# 23303)

Inj. Temp.: 290 °C

Split Vent Flow Rate: 4.5 mL/min

Oven

Oven Temp.: 80 °C to 300 °C at 40 °C/min (hold 1 min)

Carrier Gas He, constant flow

Flow Rate: 0.9 mL/min

Detector MS

Mode: Scan

Scan Program:

Group	Start Time (min.)	Scan Range (amu)	Scan Rate (scans/sec)
1	1.5	30-550	5.3

Transfer Line Temp.: 300 °C

Analyzer Type: Quadrupole

Source Temp.: 330 °C

Quad Temp.: 180 °C

Solvent Delay Time: 1.5 min

Tune Type: PFTBA

Ionization Mode: EI

Instrument Agilent 7890A GC & 5975C MSD

Sample Preparation The sample was in a 2 mL short-cap, screw-thread vial (cat.# 21143) and capped with a short-cap, screw-vial closure (cat.# 24495).