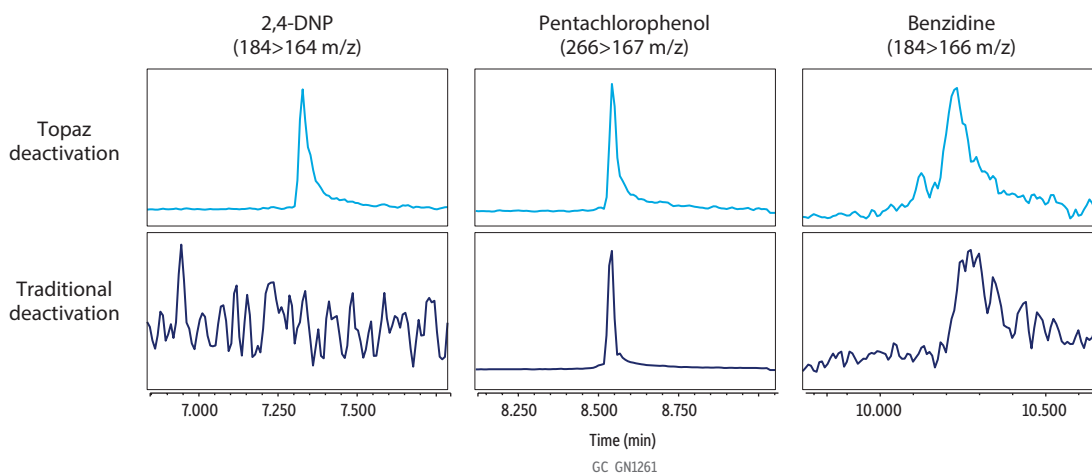


Comparative Performance of Topaz Liners



Peaks	tr (min)	Conc. (µg/mL)	SRM
1. 2,4-Dinitrophenol	7.60	0.05	184>164
2. Pentachlorophenol	8.55	0.05	266>167
3. Benzidine	10.25	0.05	184>166

Column RMX-5Sil MS GC capillary column, 30 m, 0.25 mm ID, 0.25 µm (cat.# 17323)
Standard/Sample 508.1 GC degradation check mix (cat.# 32093)
 Custom QC probe mix
Diluent: Dichloromethane
Conc.: 0.05 µg/mL
Injection
Inj. Vol.: 1 µL splitless (hold 1.2 min)
Liner: Topaz 4.0 mm ID single taper liner w/ wool (cat.# 23447)
Inj. Temp.: 250 °C
Purge Flow: 5 mL/min
Oven
Oven Temp.: 40 °C (hold 0.9 min) to 240 °C at 24.6 °C/min (hold 0 min) to 265 °C at 6.7 °C/min (hold 0 min)
Carrier Gas He, constant flow
Flow Rate: 1.5 mL/min @ 40 °C
Detector MS
Mode: SIM
Transfer Line Temp.: 330 °C
Analyzer Type: Quadrupole
Source Temp.: 330 °C
Tune Type: PFTBA
Ionization Mode: EI
Instrument Thermo Scientific TSQ 8000 Triple Quadrupole GC-MS