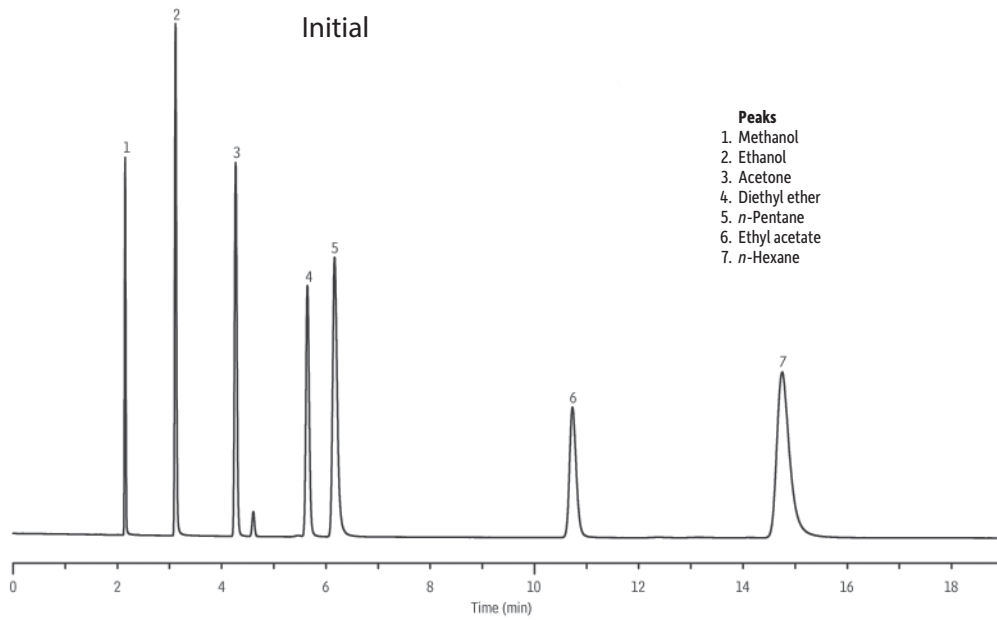
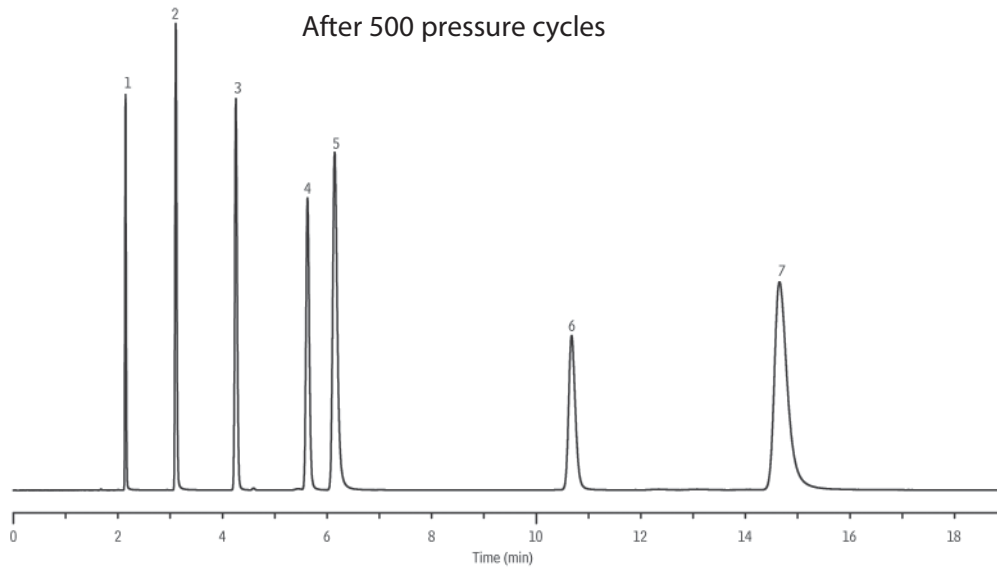


**Run-to-Run Stability**  
**Rt®-Q-BOND**



GC\_MS01140



GC\_MS01141

<b>Column</b>	Rt® -Q-BOND, 30 m, 0.53 mm ID, 20 µm (cat.# 19742)
<b>Sample</b>	QBOND Test Mix
<b>Injection</b>	
Inj. Vol.:	1.0 µL split
Liner:	Gooseneck Splitless (4mm) (cat.# 20798)
Inj. Temp.:	250 °C
Split Vent	
Flow Rate:	16 mL/min
<b>Oven</b>	
Oven Temp.:	150 °C
<b>Carrier Gas</b>	H2, constant pressure (3.0 psi, 20.7 kPa)
Linear Velocity:	30 cm/sec @ 150 °C
<b>Detector</b>	FID @ 250 °C
Make-up Gas	
Type:	N2
Data Rate:	20 Hz
<b>Instrument</b>	Agilent/HP6890 GC