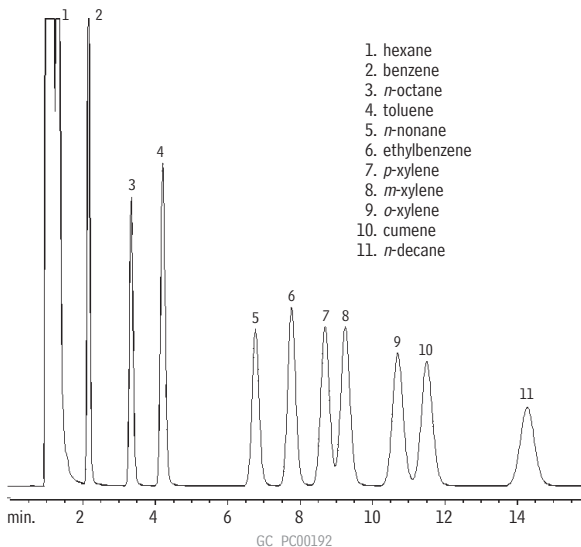


**Aromatics (Xylene Isomers plus Cumene)**  
**5% RT-1200/1.75% Bentone® 34**  
**on 100/120 Silcoport™**



5% RT-1200/1.75% Bentone® 34 on 100/120 Silcoport™ (cat.# 80125)

1.8m, 1/8" OD x 2mm ID SilcoSmooth™ tubing

Sample size: 0.1µL

Conc.: 0.5µg/µL in hexane

Oven temp.: 75°C

Inj. & det. temp.: 200°C

Carrier gas: nitrogen

Flow rate: 20mL/min.

FID sensitivity: 32 x 10<sup>11</sup> AFS