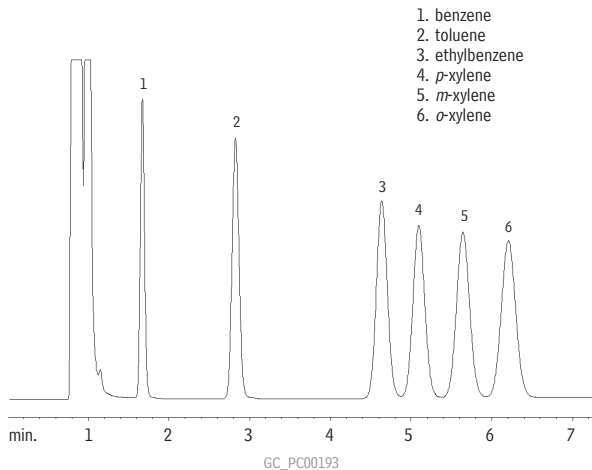


**Aromatics (Xylene Isomers /BTEX)**  
**5% RT-1200/5% Bentone® 34**  
**on 100/120 Silcoport™**



5% RT-1200/5% Bentone® 34 100/120 Silcoport™ (cat.# 80129)  
2m, 1/8" OD x 2mm ID SilcoSmooth™ tubing  
Sample size: 0.1µL  
Conc.: 0.5µg/µL in hexane  
Oven temp.: 100°C  
Inj. & det. temp.: 200°C  
Carrier gas: nitrogen  
Flow rate: 20mL/min.  
FID sensitivity: 32 x 10<sup>-11</sup> AFS