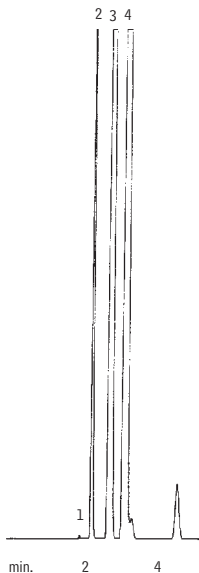


# Butane Fuel Rtx®-1

1. methane
2. propane
3. isobutane
4. butane



GC\_PC00204

60m, 0.53mm ID, 5.0 $\mu$ m Rtx®-1 (cat.# 10183)  
1.0 $\mu$ L butane fuel from a Microflame™ torch  
Direct injection using a Uniliner® liner

Oven temp.: 40°C  
Inj. & det. temp.: 200°C  
Carrier gas: hydrogen  
Linear velocity: 80cm/sec. (flow rate: 10cc/min.)  
FID sensitivity: 4 x 10<sup>-11</sup> AFS