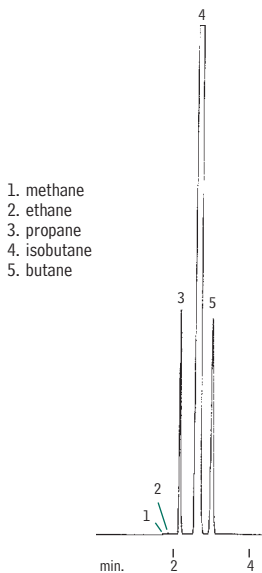


Butane Fuel Rtx[®]-1



GC_PC00205

60m, 0.53mm ID, 5.0 μ m Rtx[®]-1 (cat.# 10183)
1.0 μ L butane fuel from a disposable lighter
Direct injection using a Uniliner[®] liner

Oven temp.: 40°C
Inj. & det. temp.: 200°C
Carrier gas: hydrogen
Linear velocity: 80cm/sec. (flow rate: 10cc/min.)
FID sensitivity: 4 x 10⁻¹¹ AFS