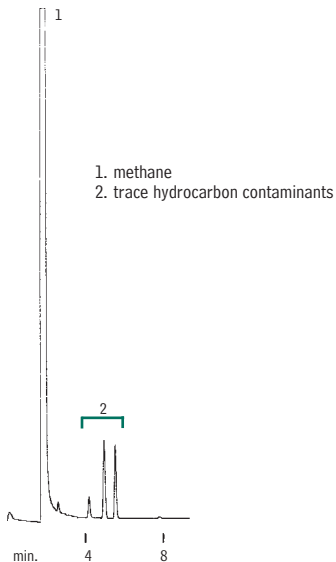


Methane Purity Rtx®-1



GC_PC00208

60m, 0.53mm ID, 5.0 μ m Rtx®-1 (cat.# 10183)
1/2cc slow injection (10 sec. duration) of ultra high purity methane
Direct injection using a Uniliner® inlet liner

Oven temp.: 40°C
Inj. & det. temp.: 200°C
Carrier gas: hydrogen
Linear velocity: 80cm/sec. (flow rate: 10cc/min.)
FID sensitivity: 4 x 10⁻¹¹ AFS

Restek Corporation 110 Benner Circle Bellefonte, PA 16823
814-353-1300 • 800-356-1688 • Fax: 814-353-1309 • www.restek.com