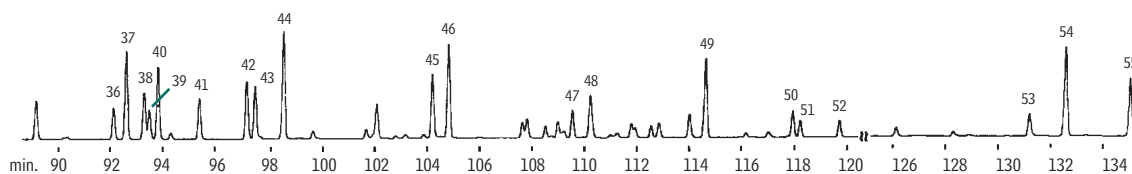
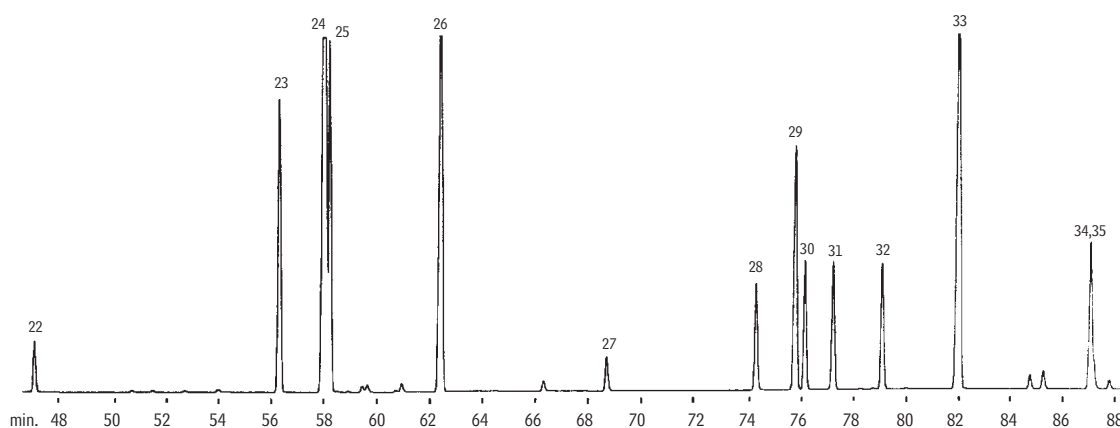
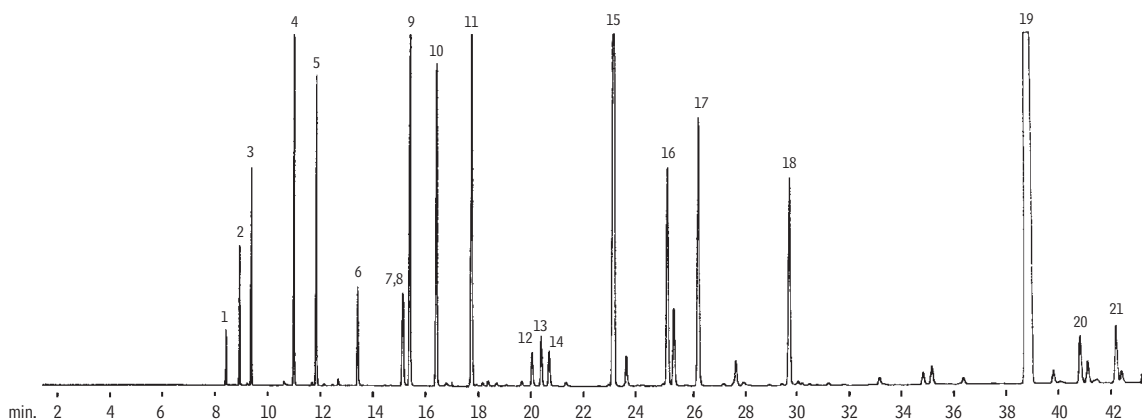


**Reformat**  
**Rtx®-1**



GC\_PC00210

- |                         |   |   |
|-------------------------|---|---|
| 1. propane              | 20. C8 paraffin                         | 39. <i>n</i> -butylbenzene              |
| 2. isobutane            | 21. C8 paraffin                         | 40. 1,2-diethylbenzene                  |
| 3. <i>n</i> -butane     | 22. C8 paraffin                         | 41. 1-methyl-2- <i>n</i> -propylbenzene |
| 4. isopentane           | 23. ethylbenzene                        | 42. 1,4-dimethyl-2-ethylbenzene         |
| 5. <i>n</i> -pentane    | 24. <i>m</i> -xylene                    | 43. 1,3-dimethyl-4-ethylbenzene         |
| 6. 2,2-dimethylbutane   | 25. <i>p</i> -xylene                    | 44. 1,2-dimethyl-4-ethylbenzene         |
| 7. cyclopentane         | 26. <i>o</i> -xylene                    | 45. 1,2,4,5-tetramethylbenzene          |
| 8. 2,3-dimethylbutane   | 27. isopropylbenzene                    | 46. 1,2,3,5-tetramethylbenzene          |
| 9. 2-methylpentane      | 28. <i>n</i> -propylbenzene             | 47. C10 indane                          |
| 10. 3-methylpentane     | 29. 1-methyl-3-ethylbenzene             | 48. C12 aromatic                        |
| 11. <i>n</i> -hexane    | 30. 1-methyl-5-ethylbenzene             | 49. naphthalene                         |
| 12. 2,2-dimethylpentane | 31. 1,3,5-trimethylbenzene              | 50. C12 aromatic                        |
| 13. methylcyclopentane  | 32. 1-methyl-2-ethylbenzene             | 51. C12 aromatic                        |
| 14. 2,4-dimethylpentane | 33. 1,2,4-trimethylbenzene              | 52. C12 aromatic                        |
| 15. benzene             | 34. 1,2,3-trimethylbenzene              | 53. C12 aromatic                        |
| 16. C7 paraffin         | 35. 1-methyl-3-isopropylbenzene         | 54. 2-methylnaphthalene                 |
| 17. C7 paraffin         | 36. 1,3-diethylbenzene                  | 55. 1-methylnaphthalene                 |
| 18. C7 paraffin         | 37. 1-methyl-3- <i>n</i> -propylbenzene |   |
| 19. toluene             | 38. 1-methyl-4- <i>n</i> -propylbenzene |   |

105m, 0.25mm ID, 0.50 $\mu$ m Rtx®-1 (cat.# 10144)  
1.0 $\mu$ L split injection of petroleum standards

Oven temp.: 30°C (hold 10 min.) to 200°C @ 1°C/min.  
Inj. & det. temp.: 250°C  
Carrier gas: helium  
Linear velocity: 20cm/sec. (flow rate: 0.7cc/min.)  
FID sensitivity: 8 x 10<sup>-11</sup> AFS  
Split Ratio: 100:1